

Recombinant MUC1 Monoclonal Antibody

catalog number: **AN300416P**

Note: Centrifuge before opening to ensure complete recovery of vial contents.

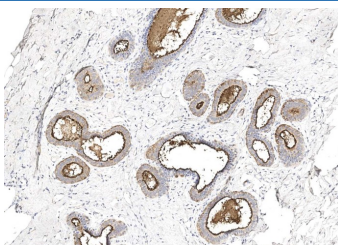
Description

Reactivity	Human
Immunogen	Recombinant Human MUC1 Protein
Host	Rabbit
Isotype	IgG
Clone	5D15
Purification	Protein A
Buffer	0.2 µm filtered solution in PBS

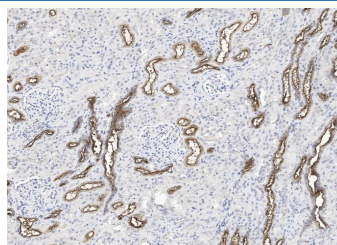
Applications Recommended Dilution

IHC-P	1:100-1:500
--------------	-------------

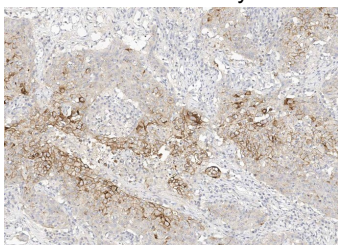
Data



Immunohistochemistry of paraffin-embedded human breast using MUC1 Monoclonal Antibody at dilution of 1:200.



Immunohistochemistry of paraffin-embedded human kidney using MUC1 Monoclonal Antibody at dilution of 1:200.



Immunohistochemistry of paraffin-embedded human squamous cell carcinoma using MUC1 Monoclonal Antibody at dilution of 1:200.

Preparation & Storage

Storage	This antibody can be stored at 2°C-8°C for one month without detectable loss of activity. Antibody products are stable for twelve months from date of receipt when stored at -20°C to -80°C. Preservative-Free. Avoid repeated freeze-thaw cycles.
Shipping	Ice bag

Background

MUC-1 (Mucin-1; also PEM, PEMT, Episialin, tumor-associated mucin, and carcinoma associated mucin) is a 240-450 kDa type I transmembrane glycoprotein. Human MUC-1 is 1255 amino acids (aa) in length and contains a 23 aa signal sequence, a 1135 aa extracellular domain (ECD), a 23 aa transmembrane segment, and a 74 aa cytoplasmic tail. The ECD consists of degenerate tandem repeats and a tandem repeat region, which makes up the major portion of the protein. Potential O-glycosylation sites (serines and threonines) make up more than one-fourth of the amino acids. Splicing variants produce ten isoforms for human MUC-1. Human MUC-1 is 28% aa identical to mouse MUC-1.

For Research Use Only

Toll-free: 1-888-852-8623
Web: www.elabscience.com

Tel: 1-832-243-6086
Email: techsupport@elabscience.com

Fax: 1-832-243-6017

Rev. V1.0