

Ferritin Heavy Polyclonal Antibody

catalog number: E-AB-40633

Note: Centrifuge before opening to ensure complete recovery of vial contents.

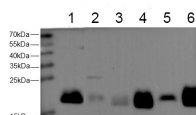
Description

Reactivity	Human;mouse;Rat
Immunogen	Recombinant human Ferritin Heavy protein expressed by E.coli
Host	Rabbit
Isotype	IgG
Purification	Antigen Affinity Purification
Buffer	PBS with 0.05% Proclin300, 1% protective protein and 50% glycerol, pH7.4

Applications

WB	1:500-1:1000
-----------	--------------

Data



Western blot with anti-Ferritin Heavy Polyclonal antibody at dilution of 1:500. lane 1: Hela whole cell lysate, lane 2: Mouse liver tissue, lane 3: Mouse spleen tissue, lane 4: Rat liver tissue, lane 5: Rat brain tissue, lane 6: Rat spleen tissue.

Observed-MW:20 kDa

Calculated-MW:20 kDa

Preparation & Storage

Storage	Store at -20°C Valid for 12 months. Avoid freeze / thaw cycles.
Shipping	The product is shipped with ice pack, upon receipt, store it immediately at the temperature recommended.

Background

Ferritin is the major intracellular iron storage protein in all organisms. It has the shape of a hollow sphere that permits entry of a variable amount of iron for storage as ferric hydroxide phosphate complexes.

For Research Use Only