

## Recombinant bFGF/FGF2 Monoclonal Antibody

**catalog number: AN300097P**

**Note:** Centrifuge before opening to ensure complete recovery of vial contents.

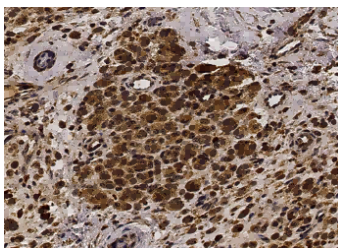
### Description

<b>Reactivity</b>	Human
<b>Immunogen</b>	A synthetic peptide corresponding to the N-terminus of the Human bFGF.
<b>Host</b>	Rabbit
<b>Isotype</b>	IgG
<b>Clone</b>	6H9
<b>Purification</b>	Protein A
<b>Buffer</b>	0.2 µm filtered solution in PBS

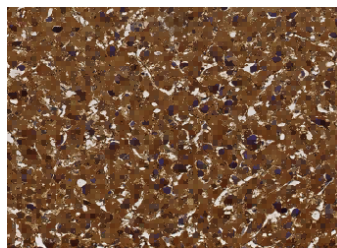
### Applications Recommended Dilution

<b>IHC-P</b>	1:250-1:1000
--------------	--------------

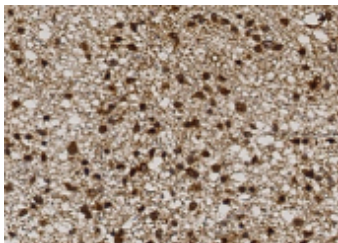
### Data



Immunohistochemistry of paraffin-embedded human malignant melanoma using bFGF / FGF2 Monoclonal Antibody at dilution of 1:500.



Immunohistochemistry of paraffin-embedded human hepatoma using bFGF / FGF2 Monoclonal Antibody at dilution of 1:500.



Immunohistochemistry of paraffin-embedded human glioma using bFGF / FGF2 Monoclonal Antibody at dilution of 1:500.

### Preparation & Storage

<b>Storage</b>	This antibody can be stored at 2°C-8°C for one month without detectable loss of activity. Antibody products are stable for twelve months from date of receipt when stored at -20°C to -80°C. Preservative-Free. Avoid repeated freeze-thaw cycles.
<b>Shipping</b>	Ice bag

### Background

### For Research Use Only

FGF basic, also known as FGF-2 and HBGF-2, is a member of the FGF family of mitogenic proteins. FGF basic is widely expressed and affects diverse aspects of embryonic development by regulating cell proliferation, differentiation, and survival. Various N-terminal extensions affect localization of FGF basic in cellular compartments but do not affect biological activity. Binding of FGF to heparin or cell surface heparan sulfate proteoglycans is necessary for binding of FGF to high affinity FGF receptors. Mature human FGF basic shares greater than 96% aa sequence identity with bovine, mouse, and rat FGF basic.