

LMNA Polyclonal Antibody

catalog number: D-AB-10192L

Note: Centrifuge before opening to ensure complete recovery of vial contents.

Description

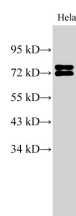
Reactivity	Human;Mouse
Immunogen	Recombinant Human LMNA protein expressed by E.coli
Host	Rabbit
Isotype	IgG
Purification	Antigen Affinity Purification
Conjugation	Unconjugated
buffer	PBS with 0.05% proclin 300, 1% protective protein and 50% glycerol,pH7.4

Applications

Recommended Dilution

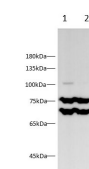
WB	1:500-1:1000
-----------	--------------

Data



Western Blot analysis of HeLa cell using LMNA Polyclonal Antibody at dilution of 1:500

Observed-MV:71 ,74 kDa
Calculated-MV:63,64,65,69,71,74 kDa



Western blot with LMNA Polyclonal antibody at dilution of 1:500.lane 1:Mouse colon,lane 2:Mouse skin

Observed-MV:71 ,74 kDa
Calculated-MV:63,64,65,69,71,74 kDa

Preparation & Storage

Storage	Store at -20°C Valid for 12 months. Avoid freeze / thaw cycles.
Shipping	The product is shipped with ice pack,upon receipt,store it immediately at the temperature recommended.

Background

The nuclear lamina consists of a two-dimensional matrix of proteins located next to the inner nuclear membrane. The lamin family of proteins make up the matrix and are highly conserved in evolution. During mitosis, the lamina matrix is reversibly disassembled as the lamin proteins are phosphorylated. Lamin proteins are thought to be involved in nuclear stability, chromatin structure and gene expression. Vertebrate lamins consist of two types, A and B. Alternative splicing results in multiple transcript variants.

For Research Use Only