

Recombinant Human PFK1/PFKM Protein (His Tag)

Catalog Number:PKSH032890



Note: Centrifuge before opening to ensure complete recovery of vial contents.

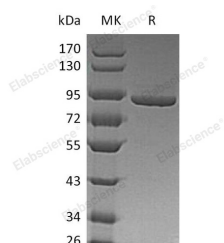
Description

Synonyms	6-phosphofructokinase;muscle type;Phosphofructo-1-kinase isozyme A;Phosphofructokinase 1;Phosphohexokinase;PFKM;PFKX;ATP-PFK;GSD7;PFK-1;PFK1;PFKA;PPP1R122
Species	Human
Expression Host	HEK293 Cells
Sequence	Thr 2-Val 780
Accession	P08237
Calculated Molecular Weight	86.1 kDa
Observed molecular weight	93 kDa
Tag	C-His

Properties

Purity	> 95 % as determined by reducing SDS-PAGE.
Endotoxin	< 1.0 EU per µg of the protein as determined by the LAL method.
Storage	Store at < -20°C, stable for 6 months. Please minimize freeze-thaw cycles.
Shipping	This product is provided as liquid. It is shipped at frozen temperature with blue ice/gel packs. Upon receipt, store it immediately at < - 20°C.
Formulation	Supplied as a 0.2 µm filtered solution of 20mM PB, 150mM NaCl, 5mM EDTA, 5% Trehalose, pH 6.9.
Reconstitution	Not Applicable

Data



> 95 % as determined by reducing SDS-PAGE.

Background

6-phosphofructokinase, muscle type is a muscle-type isozyme that in humans is encoded by the PFKM gene. It belongs to the phosphofructokinase family and Two domains subfamily. PFKM functions as subunits of the mammalian tetramer phosphofructokinase, which catalyzes the phosphorylation of fructose-6-phosphate to fructose-1,6-bisphosphate. PFK1 converts fructose 6-phosphate and ATP into fructose 1,6-bisphosphate (through PFK-1), fructose 2,6-bisphosphate (through PFK-2) and ADP.

For Research Use Only

A Reliable Research Partner in Life Science and Medicine

Toll-free: 1-888-852-8623

Web: www.elabscience.com

Tel: 1-832-243-6086

Email: techsupport@elabscience.com

Fax: 1-832-243-6017