

METTL3 Polyclonal Antibody

catalog number: E-AB-63141

Note: Centrifuge before opening to ensure complete recovery of vial contents.

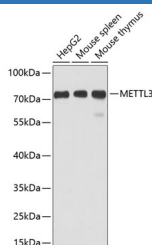
Description

Reactivity	Human;Mouse;Rat
Immunogen	Recombinant fusion protein of human METTL3 (NP_062826.2).
Host	Rabbit
Isotype	IgG
Purification	Affinity purification
Conjugation	Unconjugated
buffer	Phosphate buffered solution, pH 7.4, containing 0.05% stabilizer and 50% glycerol.

Applications

WB	1:500-1:2000
IF	1:50-1:200

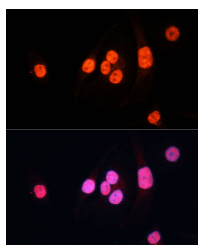
Data



Western blot analysis of extracts of various cell lines using METTL3 Polyclonal Antibody at dilution of 1:1000.

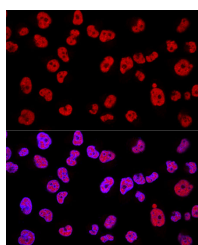
Observed-MV:80 kDa

Calculated-MV:25 kDa/64 kDa



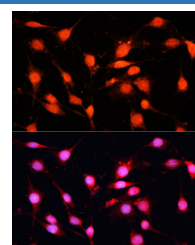
Immunofluorescence analysis of HeLa cells using METTL3 Polyclonal Antibody at dilution of 1:100 (40x lens). Blue:

DAPI for nuclear staining.



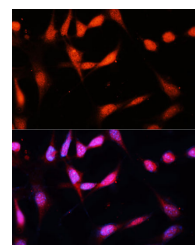
Confocal immunofluorescence analysis of HeLa cells using METTL3 Polyclonal Antibody at dilution of 1:200. Blue:

DAPI for nuclear staining.



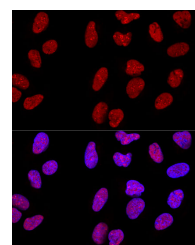
Immunofluorescence analysis of C6 cells using METTL3 Polyclonal Antibody at dilution of 1:100 (40x lens). Blue:

DAPI for nuclear staining.



Immunofluorescence analysis of NIH/3T3 cells using METTL3 Polyclonal Antibody at dilution of 1:100 (40x

lens). Blue: DAPI for nuclear staining.



Confocal immunofluorescence analysis of U-2 OS cells using METTL3 Polyclonal Antibody at dilution of 1:200.

Blue: DAPI for nuclear staining.

Preparation & Storage

For Research Use Only

METTL3 Polyclonal Antibody

catalog number: E-AB-63141



Storage	Store at -20°C Valid for 12 months. Avoid freeze / thaw cycles.
Shipping	The product is shipped with ice pack, upon receipt, store it immediately at the temperature recommended.

Background

This gene encodes the 70 kDa subunit of MT-A which is part of N6-adenosine-methyltransferase. This enzyme is involved in the posttranscriptional methylation of internal adenosine residues in eukaryotic mRNAs, forming N6-methyladenosine.

For Research Use Only

A Reliable Research Partner in Life Science and Medicine
Tel: 400-999-2100

Email: techsupport@elabscience.cn

Web: www.elabscience.cn

Rev. V1.7