

## PLEKHG6 Polyclonal Antibody

**catalog number: E-AB-11416**

**Note:** Centrifuge before opening to ensure complete recovery of vial contents.

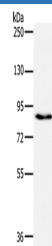
### Description

<b>Reactivity</b>	Human;Mouse
<b>Immunogen</b>	Recombinant protein of human PLEKHG6
<b>Host</b>	Rabbit
<b>Isotype</b>	IgG
<b>Purification</b>	Affinity purification
<b>Buffer</b>	Phosphate buffered solution, pH 7.4, containing 0.05% stabilizer and 50% glycerol.

### Applications Recommended Dilution

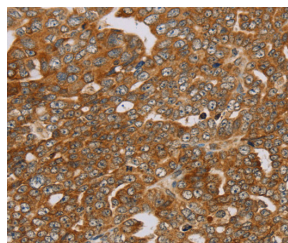
<b>WB</b>	1:500-1:2000
<b>IHC</b>	1:100-1:300

### Data

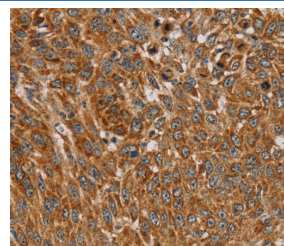


Western Blot analysis of 231 cell using PLEKHG6 Polyclonal Antibody at dilution of 1:800

**Calculated-MW:89 kDa**



Immunohistochemistry of paraffin-embedded Human cervical cancer using PLEKHG6 Polyclonal Antibody at dilution of 1:45



Immunohistochemistry of paraffin-embedded Human lung cancer using PLEKHG6 Polyclonal Antibody at dilution of 1:45

### Preparation & Storage

<b>Storage</b>	Store at -20°C Valid for 12 months. Avoid freeze / thaw cycles.
<b>Shipping</b>	The product is shipped with ice pack, upon receipt, store it immediately at the temperature recommended.

### Background

### For Research Use Only

PLEKHG6 functions as a guanine nucleotide exchange factor activating the small GTPase RHOA, which, in turn, induces myosin filament formation. It activates RHOG but not activate RAC1, or to a much lower extent than RHOA and RHOG. Part of a functional unit, involving MyoGEF, MYH10 and RHOA, at the cleavage furrow to advance furrow ingression during cytokinesis. In epithelial cells, required for the formation of microvilli and membrane ruffles on the apical pole. Along with EZR, required for normal macropinocytosis.

## For Research Use Only

Toll-free: 1-888-852-8623  
Web: [www.elabscience.com](http://www.elabscience.com)

Tel: 1-832-243-6086  
Email: [techsupport@elabscience.com](mailto:techsupport@elabscience.com)

Fax: 1-832-243-6017

Rev. V1.8