

ATG9A Polyclonal Antibody

catalog number: E-AB-14724

Note: Centrifuge before opening to ensure complete recovery of vial contents.

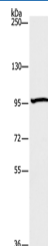
Description

Reactivity	Human;Rat
Immunogen	Recombinant protein of human ATG9A
Host	Rabbit
Isotype	IgG
Purification	Affinity purification
Buffer	Phosphate buffered solution, pH 7.4, containing 0.05% stabilizer and 50% glycerol.

Applications

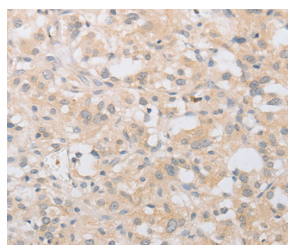
Applications	Recommended Dilution
WB	1:200-1:1000
IHC	1:25-1:100

Data

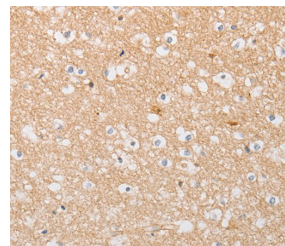


Western Blot analysis of 293T cell using ATG9A Polyclonal Antibody at dilution of 1:240

Calculated-MW:94 kDa



Immunohistochemistry of paraffin-embedded Human thyroid cancer using ATG9A Polyclonal Antibody at dilution of 1:30



Immunohistochemistry of paraffin-embedded Human brain using ATG9A Polyclonal Antibody at dilution of 1:30

Preparation & Storage

Storage	Store at -20°C Valid for 12 months. Avoid freeze / thaw cycles.
Shipping	The product is shipped with ice pack, upon receipt, store it immediately at the temperature recommended.

Background

Autophagy-related protein 9A is a protein that in humans is encoded by the ATG9A gene. Involved in autophagy and cytoplasm to vacuole transport (Cvt) vesicle formation. Plays a key role in the organization of the preautophagosomal structure/phagophore assembly site (PAS), the nucleating site for formation of the sequestering vesicle. Cycles between a juxta-nuclear trans-Golgi network compartment and late endosomes. Nutrient starvation induces accumulation on autophagosomes.

For Research Use Only