

Recombinant Human APE1/APE Protein

Catalog Number: PKSH032090

Note: Centrifuge before opening to ensure complete recovery of vial contents.

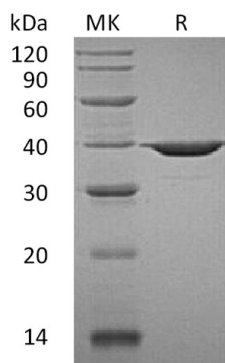
Description

Species	Human
Source	E.coli-derived Human APE1;APE protein Pro2-Leu318
Calculated MW	35.6 kDa
Observed MW	40 kDa
Accession	AAH02338.1
Bio-activity	Not validated for activity

Properties

Purity	> 95 % as determined by reducing SDS-PAGE.
Concentration	Subject to label value.
Endotoxin	< 1.0 EU per µg of the protein as determined by the LAL method.
Storage	Store at < -20°C, stable for 6 months. Please minimize freeze-thaw cycles.
Shipping	This product is provided as liquid. It is shipped at frozen temperature with blue ice/gel packs. Upon receipt, store it immediately at < - 20°C.
Formulation	Supplied as a 0.2 µm filtered solution of 10mM HEPES, 100mM KCl, 50% Glycerol, pH 7.4.

Data



> 95 % as determined by reducing SDS-PAGE.

Background

Apurinic-Apyrimidinic Endonuclease 1 (APE1) is required for efficient DNA base excision repair. When the DNA glycosylase remove the damaged bases; APE1 cleaves the AP site to allow resynthesis and ligation to complete repair. APE1 stimulates the DNA binding activity of many transcription factors; which participate in cancer promotion and progression. APE1 regulates the redox state of multiple transcription factors; such as c-Jun; c-Fos; NF-kB; p53. APEN is also involved in calcium-dependent down-regulation of PTH expression.