

Elab Fluor® Violet 450 Anti-Human TCRVγ9 Antibody[B3]

Catalog Number: AN00357Q

Note: Centrifuge before opening to ensure complete recovery of vial contents.

Description

| | |
|-------------------------|--|
| Reactivity | Human |
| Host | Mouse |
| Isotype | Mouse IgG1 |
| Clone No. | B3 |
| Isotype Control | Elab Fluor® Violet 450 Mouse IgG1, κ Isotype Control[MOPC-21] [Product E-AB-F09792Q] |
| Conjugation | Elab Fluor® Violet 450 |
| Conjugation Information | Elab Fluor® Violet 450 is designed to be excited by the violet laser (405 nm) and detected using an optical filter centered near 450 nm (e.g., a 450/45 nm bandpass filter). |
| Storage Buffer | Phosphate buffered solution, pH 7.2, containing 0.09% stabilizer and 1% protein protectant |

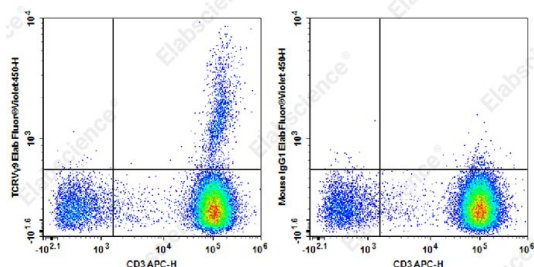
Applications

Recommended usage

FCM

Each lot of this antibody is quality control tested by flow cytometric analysis. **The amount of the reagent is suggested to be used 5 μL of antibody per test (million cells in 100 μL staining volume or per 100 μL of whole blood).** Please check your vial before the experiment. Since applications vary, the appropriate dilutions must be determined for individual use.

Data



Staining of normal human peripheral blood cells with APC

Anti-Human CD3 Antibody and Elab Fluor® Violet 450 Anti-Human TCR Vγ9 Antibody[B3] (left) or Elab Fluor® Violet 450 Mouse IgG1, κ Isotype Control (right). Cells in the lymphocytes gate were used for analysis.

Preparation & Storage

| | |
|----------|---|
| Storage | Keep as concentrated solution. This product can be stored at 2-8°C for 12 months. Please protected from prolonged exposure to light and do not freeze. |
| Shipping | Ice bag |

Antigen Information

| | |
|-----------------|--|
| Alternate Names | T cell receptor Vγ9;TCR Vγ2;TRGV9;TCRGV2S1 |
| Uniprot ID | Q99603 |

For Research Use Only

Toll-free: 1-888-852-8623
Web: www.elabscience.com

Tel: 1-832-243-6086
Email: techsupport@elabscience.com

Fax: 1-832-243-6017

Rev. V1.6

Gene ID

6965

Background

The V γ 9 TCR is a variant of the TCR γ chain expressed on a subset of γ/δ T cells. V γ 9V δ 2 T lymphocytes, a major γ/δ T cell subset in humans, recognize phosphoantigens, certain tumor cells, and cells treated with aminobisphosphonates. This cell population displays cytolytic activity against various tumor cells. The γ/δ TCR is a heterodimeric TCR complex composed of covalently bound γ and δ chains involved in antigen recognition and the non-covalently associated monomorphic proteins CD3 δ , γ , ϵ , and ζ chains.