

## Recombinant Human Sperm-associated antigen 5/SPAG5 protein (His Tag)

**Catalog Number:** PDEH100978

**Note:** Centrifuge before opening to ensure complete recovery of vial contents.

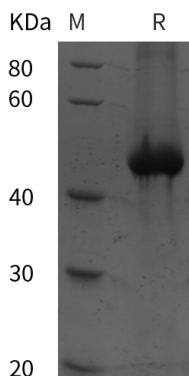
### Description

<b>Species</b>	Human
<b>Source</b>	E.coli-derived Human SPAG5 protein Asn482-Ala850, with an N-terminal His & C-terminal His
<b>Calculated MW</b>	40.5 kDa
<b>Observed MW</b>	48 kDa
<b>Accession</b>	Q96R06
<b>Bio-activity</b>	Not validated for activity

### Properties

<b>Purity</b>	> 95% as determined by reducing SDS-PAGE.
<b>Endotoxin</b>	< 10 EU/mg of the protein as determined by the LAL method
<b>Storage</b>	Generally, lyophilized proteins are stable for up to 12 months when stored at -20 to -80 °C. Reconstituted protein solution can be stored at 4-8°C for 2-7 days. Aliquots of reconstituted samples are stable at < -20°C for 3 months.
<b>Shipping</b>	This product is provided as lyophilized powder which is shipped with ice packs.
<b>Formulation</b>	Lyophilized from a 0.2 µm filtered solution in PBS with 5% Trehalose and 5% Mannitol.
<b>Reconstitution</b>	It is recommended that sterile water be added to the vial to prepare a stock solution of 0.5 mg/mL. Concentration is measured by UV-Vis.

### Data



> 95 % as determined by reducing SDS-PAGE.

### Background

Astrin is a homodimeric protein with a globular head domain and a long stalk. It is an essential component of the mitotic spindle. Astrin is highly expressed in testis and is detected at low levels in placenta, liver, pancreas, thymus and colon. Its expression is cell cycle-regulated, with an increase from prophase to cytokinesis and return to basal levels at the next G1 phase. In non-dividing cells Astrin is associated with microtubules unless under cellular stress, then it is localized in stress granules.

### For Research Use Only

Toll-free: 1-888-852-8623  
Web: [www.elabscience.com](http://www.elabscience.com)

Tel: 1-832-243-6086  
Email: [techsupport@elabscience.com](mailto:techsupport@elabscience.com)

Fax: 1-832-243-6017

Rev. V1.4