

## ANAPC13 Polyclonal Antibody

catalog number: E-AB-10811

**Note:** Centrifuge before opening to ensure complete recovery of vial contents.

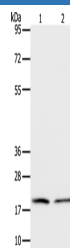
### Description

Reactivity	Human;Mouse
Immunogen	Recombinant protein of human ANAPC13
Host	Rabbit
Isotype	IgG
Purification	Affinity purification
Buffer	Phosphate buffered solution, pH 7.4, containing 0.05% stabilizer and 50% glycerol.

### Applications Recommended Dilution

WB	1:500-1:2000
----	--------------

### Data



Western Blot analysis of Jurkat and RAW264.7 cell using  
ANAPC13 Polyclonal Antibody at dilution of 1:600

**Calculated-MW:8.5 kDa**

### Preparation & Storage

Storage	Store at -20°C Valid for 12 months. Avoid freeze / thaw cycles.
Shipping	The product is shipped with ice pack, upon receipt, store it immediately at the temperature recommended.

### Background

This gene encodes a component of the anaphase promoting complex, a large ubiquitin-protein ligase that controls cell cycle progression by regulating the degradation of cell cycle regulators such as B-type cyclins. The encoded protein is evolutionarily conserved and is required for the integrity and ubiquitin ligase activity of the anaphase promoting complex. Pseudogenes and splice variants have been found for this gene; however, the biological validity of some of the splice variants has not been determined.

### For Research Use Only