

## Recombinant Human HSPB8 Protein (His Tag)

**Catalog Number:** PKSH032525

**Note:** Centrifuge before opening to ensure complete recovery of vial contents.

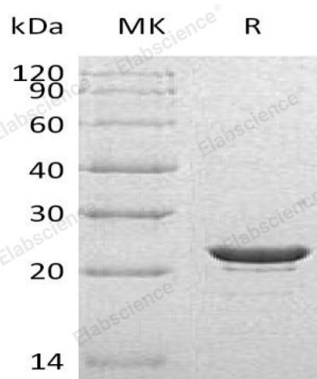
### Description

<b>Species</b>	Human
<b>Source</b>	E.coli-derived Human HSPB8 protein Met 1-Thr196, with an C-terminal His
<b>Calculated MW</b>	22.7 kDa
<b>Observed MW</b>	23 kDa
<b>Accession</b>	Q9UJY1
<b>Bio-activity</b>	Not validated for activity

### Properties

<b>Purity</b>	> 95 % as determined by reducing SDS-PAGE.
<b>Concentration</b>	Subject to label value.
<b>Endotoxin</b>	< 1.0 EU per µg of the protein as determined by the LAL method.
<b>Storage</b>	Store at < -20°C, stable for 6 months. Please minimize freeze-thaw cycles.
<b>Shipping</b>	This product is provided as liquid. It is shipped at frozen temperature with blue ice/ gel packs. Upon receipt, store it immediately at < - 20°C.
<b>Formulation</b>	Supplied as a 0.2 µm filtered solution of 20mM PB, 150mM NaCl, 5mM EDTA, pH 7.4.

### Data



> 95 % as determined by reducing SDS-PAGE.

### Background

Heat shock protein beta-8 (HSPB8) belongs to the small heat shock protein (HSP20) family. This protein can be induced by 17-beta-estradiol, and is predominantly expressed in skeletal muscle and heat, mainly located in the cytoplasm and nucleus. HSPB8 usually exists in monomer, it can interact with HSPB1 and DNAJB6. HSPB8 displays temperature-dependent chaperone activity, appears to be involved in regulation of cell proliferation, apoptosis, and carcinogenesis, and mutations in this gene have been associated with different neuromuscular diseases, including Charcot-Marie-Tooth disease.

### For Research Use Only

Toll-free: 1-888-852-8623  
Web: [www.elabscience.com](http://www.elabscience.com)

Tel: 1-832-243-6086  
Email: [techsupport@elabscience.com](mailto:techsupport@elabscience.com)

Fax: 1-832-243-6017