

Recombinant Human NRCAM Protein (Fc Tag)

Catalog Number: PKSH033581

Note: Centrifuge before opening to ensure complete recovery of vial contents.

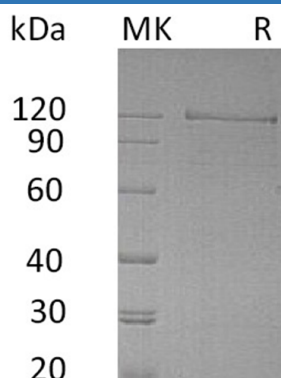
Description

| | |
|---------------------|----------------------------|
| Species | Human |
| Mol_Mass | 91.2 kDa |
| Accession | AAI15737.1 |
| Bio-activity | Not validated for activity |

Properties

| | |
|-----------------------|--|
| Purity | > 90 % as determined by reducing SDS-PAGE. |
| Endotoxin | < 1.0 EU per µg of the protein as determined by the LAL method. |
| Storage | Generally, lyophilized proteins are stable for up to 12 months when stored at -20 to -80 °C. Reconstituted protein solution can be stored at 4-8°C for 2-7 days. Aliquots of reconstituted samples are stable at < -20°C for 3 months. |
| Shipping | This product is provided as lyophilized powder which is shipped with ice packs. |
| Formulation | Lyophilized from a 0.2 µm filtered solution of PBS, pH 7.4. Normally 5% - 8% trehalose, mannitol and 0.01% Tween 80 are added as protectants before lyophilization. Please refer to the specific buffer information in the printed manual. |
| Reconstitution | Please refer to the printed manual for detailed information. |

Data



> 90 % as determined by reducing SDS-PAGE.

Background

Neuronal cell adhesion molecule (NRCAM) is a single-pass type I membrane protein, containing 5 fibronectin type-III domains and 6 Ig-like C2-type (immunoglobulin-like) domains. It belongs to the immunoglobulin superfamily. NRCAM is engaged in such biological processes as axonal fasciculation, cell-cell adhesion, central nervous system development, clustering of voltage-gated sodium channels, neuron migration, positive regulation of neuron differentiation, regulation of axon extension, and synaptogenesis. It also may play a role in the molecular assembly of the nodes of Ranvier. NRCAM effects are also linked with different recognition processes and signal transduction pathways regulating cell differentiation, proliferation, or migration.

For Research Use Only