

Recombinant Mouse Host Cell Factor 2/HCFC2 Protein (His Tag)

Catalog Number:PKSM041254



Note: Centrifuge before opening to ensure complete recovery of vial contents.

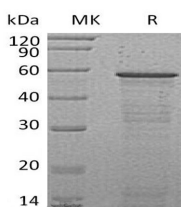
Description

Synonyms	Host cell factor 2;HCF-2;C2 factor;Hcfc2
Species	Mouse
Expression Host	E.coli
Sequence	Met1-Glu486
Accession	G5E837
Calculated Molecular Weight	55.2 kDa
Observed molecular weight	55 kDa
Tag	N-His

Properties

Purity	> 95 % as determined by reducing SDS-PAGE.
Endotoxin	< 1.0 EU per µg of the protein as determined by the LAL method.
Storage	Store at < -20°C, stable for 6 months. Please minimize freeze-thaw cycles.
Shipping	This product is provided as liquid. It is shipped at frozen temperature with blue ice/gel packs. Upon receipt, store it immediately at < - 20°C.
Formulation	Supplied as a 0.2 µm filtered solution of PBS, 2M Urea, pH 7.4.
Reconstitution	Not Applicable

Data



> 95 % as determined by reducing SDS-PAGE.

Background

Host cell factor 2(HCFC2) is a cytoplasmic protein. It contains 2 fibronectin type-III domains.HCFC2 binds KMT2A/MLL1, as component of the MLL1/MLL complex.Hcfc2 negative regulation of transcription from RNA polymerase II promoter.

For Research Use Only

A Reliable Research Partner in Life Science and Medicine

Toll-free: 1-888-852-8623

Web: www.elabscience.com

Tel: 1-832-243-6086

Email: techsupport@elabscience.com

Fax: 1-832-243-6017