

# Recombinant Human SerpinG1/C1IN Protein (His Tag)

Catalog Number:PKSH033043



**Note:** Centrifuge before opening to ensure complete recovery of vial contents.

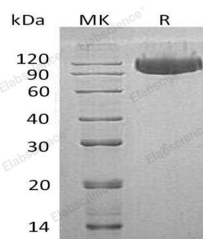
## Description

<b>Synonyms</b>	Plasma Protease C1 Inhibitor;C1 Inh;C1Inh;C1 Esterase Inhibitor;C1-Inhibiting Factor;Serpine G1;SERPING1;C1IN;C1NH;HAE1;HAE2
<b>Species</b>	Human
<b>Expression Host</b>	HEK293 Cells
<b>Sequence</b>	Asn23-Ala500
<b>Accession</b>	AAH11171.1
<b>Calculated Molecular Weight</b>	53.9 kDa
<b>Observed molecular weight</b>	102 kDa
<b>Tag</b>	C-His

## Properties

<b>Purity</b>	> 95 % as determined by reducing SDS-PAGE.
<b>Endotoxin</b>	< 1.0 EU per µg of the protein as determined by the LAL method.
<b>Storage</b>	Generally, lyophilized proteins are stable for up to 12 months when stored at -20 to -80°C. Reconstituted protein solution can be stored at 4-8°C for 2-7 days. Aliquots of reconstituted samples are stable at < -20°C for 3 months.
<b>Shipping</b>	This product is provided as lyophilized powder which is shipped with ice packs.
<b>Formulation</b>	Lyophilized from a 0.2 µm filtered solution of 20mM Tris-HCl, 150mM NaCl, pH 8.0. Normally 5 % - 8 % trehalose, mannitol and 0.01% Tween80 are added as protectants before lyophilization. Please refer to the specific buffer information in the print
<b>Reconstitution</b>	Please refer to the printed manual for detailed information.

## Data



> 95 % as determined by reducing SDS-PAGE.

## Background

As protease inhibitors, serpins have an array of functions including regulating blood clotting, the complement pathway, extracellular matrix remodeling, and cell motility. Serpin G1 is a serine protease inhibitor protein. It is the largest member among the serpin class of proteins. Remarkably, Serpin G1 has a 2-domain structure, unlike most family members. The C-terminal serpin domain is similar to other serpins, and this part of Serpin G1 provides the inhibitory activity. The N-terminal domain is not essential for Serpin G1 to inhibit proteinases and has no similarity to other proteins. The main function of Serpin G1 is the inhibition of the complement system to prevent spontaneous activation. Serpin G1 is an acute

## For Research Use Only

A Reliable Research Partner in Life Science and Medicine

Toll-free: 1-888-852-8623

Web: [www.elabscience.com](http://www.elabscience.com)

Tel: 1-832-243-6086

Email: [techsupport@elabscience.com](mailto:techsupport@elabscience.com)

Fax: 1-832-243-6017

# Recombinant Human SerpinG1/C1IN Protein (His Tag)

Catalog Number:PKSH033043

**DIA • AN**®  
by Elabscience

phase protein and circulates in blood at levels of around 0.25g/L, whose levels rise 2-fold during inflammation. Although named after its complement inhibitory activity, Serpin G1 also inhibits proteinases of the fibrinolytic, clotting, and kinin pathways. Most notably, Serpin G1 play a potentially crucial role in regulating important physiological pathways including complement activation, blood coagulation, fibrinolysis and the generation of kinins. It is also the most important physiological inhibitor of fXIIa, chymotrypsin and plasma kallikrein.

## For Research Use Only

A Reliable Research Partner in Life Science and Medicine

Toll-free: 1-888-852-8623

Tel: 1-832-243-6086

Fax: 1-832-243-6017

Web: [www.elabscience.com](http://www.elabscience.com)

Email: [techsupport@elabscience.com](mailto:techsupport@elabscience.com)