

## Recombinant Human dUTPase Protein

**Catalog Number:** PKSH032364

**Note:** Centrifuge before opening to ensure complete recovery of vial contents.

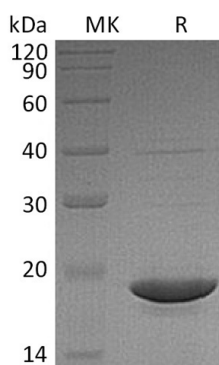
### Description

<b>Species</b>	Human
<b>Source</b>	E.coli-derived Human dUTPase protein Met 1-Asn164
<b>Calculated MW</b>	17.7 kDa
<b>Observed MW</b>	17 kDa
<b>Accession</b>	P33316-2
<b>Bio-activity</b>	Not validated for activity

### Properties

<b>Purity</b>	> 95 % as determined by reducing SDS-PAGE.
<b>Concentration</b>	Subject to label value.
<b>Endotoxin</b>	< 1.0 EU per µg of the protein as determined by the LAL method.
<b>Storage</b>	Store at < -20°C, stable for 6 months. Please minimize freeze-thaw cycles.
<b>Shipping</b>	This product is provided as liquid. It is shipped at frozen temperature with blue ice/ gel packs. Upon receipt, store it immediately at < - 20°C.
<b>Formulation</b>	Supplied as a 0.2 µm filtered solution of PBS, pH7.4.

### Data



> 95 % as determined by reducing SDS-PAGE.

### Background

Deoxyuridine 5'-Triphosphate Nucleotidohydrolase Mitochondrial (dUTPase) belongs to the dUTPase family. dUTPase exists as a homotrimer and is involved in nucleotide metabolism. dUTPase produces dUMP; the immediate precursor of thymidine nucleotides and it decreases the intracellular concentration of dUTP so that uracil cannot be incorporated into DNA. The dUTPase increase in PCR product yield; length and fidelity enables further down-stream applications. These effects make dUTPase useful in PCR fidelity and yield-sensitive applications. dUTPase is specific for dUTP and is critical for the fidelity of DNA replication and repair.

### For Research Use Only

Toll-free: 1-888-852-8623  
Web: [www.elabscience.com](http://www.elabscience.com)

Tel: 1-832-243-6086  
Email: [techsupport@elabscience.com](mailto:techsupport@elabscience.com)

Fax: 1-832-243-6017