

LETMD1 Polyclonal Antibody

catalog number: E-AB-15090

Note: Centrifuge before opening to ensure complete recovery of vial contents.

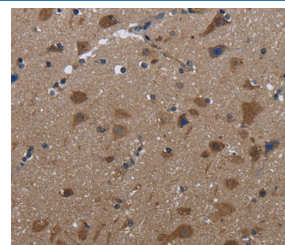
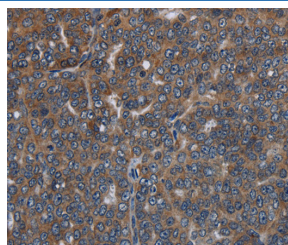
Description

| | |
|---------------------|--|
| Reactivity | Human |
| Immunogen | Recombinant protein of human LETMD1 |
| Host | Rabbit |
| Isotype | IgG |
| Purification | Affinity purification |
| Buffer | Phosphate buffered solution, pH 7.4, containing 0.05% stabilizer and 50% glycerol. |

Applications Recommended Dilution

| | |
|------------|------------|
| IHC | 1:50-1:200 |
|------------|------------|

Data



Immunohistochemistry of paraffin-embedded Human ovarian cancer tissue using LETMD1 Polyclonal Antibody at dilution 1:30

Immunohistochemistry of paraffin-embedded Human brain tissue using LETMD1 Polyclonal Antibody at dilution 1:30

Preparation & Storage

| | |
|-----------------|--|
| Storage | Store at -20°C Valid for 12 months. Avoid freeze / thaw cycles. |
| Shipping | The product is shipped with ice pack, upon receipt, store it immediately at the temperature recommended. |

Background

This gene encodes a mitochondrial outer membrane protein. It has a potential role in tumorigenesis, which may result from negative regulation of the p53 tumor suppressor gene. Alternatively spliced transcript variants have been noted for this gene.

For Research Use Only