

CK-8 Monoclonal Antibody

Catalog Number: E-AB-22018

Note: Centrifuge before opening to ensure complete recovery of vial contents.

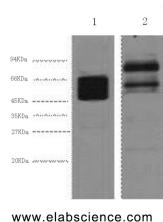
Description

Reactivity	Human, Mouse, Rat
Immunogen	Synthetic Peptide
Host	Mouse
Isotype	IgG
Clone	Clone: 5K3
Purification	Protein A purification
Conjugation	Unconjugated
Formulation	PBS with 0.02% sodium azide and 50% glycerol pH 7.4.

Applications Recommended Dilution

WB	1:2000-5000
IHC	1:50-1:200

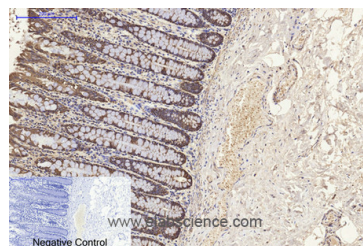
Data



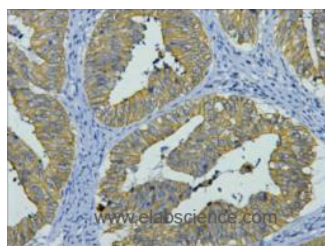
www.elabscience.com

Western Blot analysis of 1) Hela, 2) Mouse brain using CK-8 Monoclonal Antibody at dilution of 1:4000.

Observed MW: 54kDa
Calculated Mw: 54kDa



Immunohistochemistry of paraffin-embedded Human colon tissue using CK-8 Monoclonal Antibody at dilution of 1:200.



Immunohistochemistry of paraffin-embedded Human colon cancer tissue using CK-8 Monoclonal Antibody at dilution of 1:200.

Preparation & Storage

Storage Store at -20°C. Avoid freeze / thaw cycles.

Background

For Research Use Only

A Reliable Research Partner in Life Science and Medicine

Toll-free: 1-888-852-8623

Web: www.elabscience.com

Tel: 1-832-243-6086

Email: techsupport@elabscience.com

Fax: 1-832-243-6017

CK-8 Monoclonal Antibody

Catalog Number: E-AB-22018



Together with KRT19, helps to link the contractile apparatus to dystrophin at the costameres of striated muscle.

For Research Use Only

A Reliable Research Partner in Life Science and Medicine

Toll-free: 1-888-852-8623

Tel: 1-832-243-6086

Fax: 1-832-243-6017

Web: www.elabscience.com

Email: techsupport@elabscience.com