

HPCAL1 Polyclonal Antibody

Catalog Number:E-AB-53071



Note: Centrifuge before opening to ensure complete recovery of vial contents.

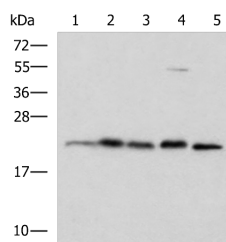
Description

Reactivity	Human, Mouse, Rat
Immunogen	Fusion protein of human HPCAL1
Host	Rabbit
Isotype	IgG
Purification	Antigen affinity purification
Conjugation	Unconjugated
Formulation	PBS with 0.05% NaN3 and 40% Glycerol,pH7.4

Applications Recommended Dilution

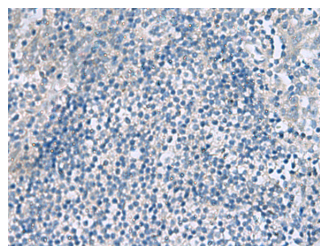
WB	1:1000-1:5000
IHC	1:50-1:200
ELISA	1:5000-1:10000

Data

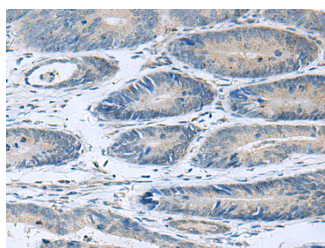


Western blot analysis of A172 HepG2 Hela cell Rat brain tissue and Mouse brain tissue lysates using HPCAL1 Polyclonal Antibody at dilution of 1:1250

Observed Mw:Refer to figures
Calculated Mw:22 kDa



Immunohistochemistry of paraffin-embedded Human tonsil tissue using HPCAL1 Polyclonal Antibody at dilution of 1:90(×200)



Immunohistochemistry of paraffin-embedded Human colorectal cancer tissue using HPCAL1 Polyclonal Antibody at dilution of 1:90(×200)

Preparation & Storage

Storage Store at -20°C. Avoid freeze / thaw cycles.

Background

For Research Use Only

A Reliable Research Partner in Life Science and Medicine

Toll-free: 1-888-852-8623

Web: www.elabscience.com

Tel: 1-832-243-6086

Email: techsupport@elabscience.com

Fax: 1-832-243-6017

HPCAL1 Polyclonal Antibody

Catalog Number: E-AB-53071



The protein encoded by this gene is a member of neuron-specific calcium-binding proteins family found in the retina and brain. It is highly similar to human hippocalcin protein and nearly identical to the rat and mouse hippocalcin like-1 proteins. It may be involved in the calcium-dependent regulation of rhodopsin phosphorylation and may be of relevance for neuronal signalling in the central nervous system. Several alternatively spliced transcript variants encoding the same protein have been found for this gene.

For Research Use Only

A Reliable Research Partner in Life Science and Medicine

Toll-free: 1-888-852-8623

Tel: 1-832-243-6086

Fax: 1-832-243-6017

Web: www.elabscience.com

Email: techsupport@elabscience.com