

## Recombinant Phospho-Smad3 (Ser423, Ser425) Monoclonal Antibody

catalog number: AN301148L

**Note:** Centrifuge before opening to ensure complete recovery of vial contents.

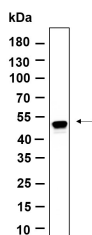
### Description

<b>Reactivity</b>	Human;Mouse
<b>Immunogen</b>	A synthetic peptide corresponding to residues around (Ser423, Ser425) of Human Phospho-Smad3
<b>Host</b>	Rabbit
<b>Isotype</b>	IgG,k
<b>Clone</b>	B907
<b>Purification</b>	Protein A
<b>Buffer</b>	PBS, 50% glycerol, 0.05% Proclin 300, 0.05% protein protectant.

### Applications Recommended Dilution

<b>IHC</b>	1:200-1:1000
<b>WB</b>	1:2000-1:10000
<b>IF</b>	1:200-1:1000
<b>ELISA</b>	1:5000-1:20000

### Data

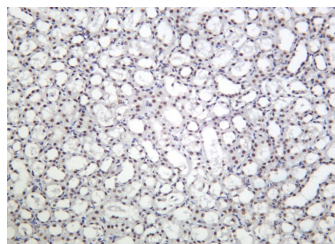


Western Blot with Recombinant Phospho-Smad3 (Ser423, Ser425) Monoclonal Antibody at dilution of 1:1000 dilution.

Lane A: HT-1080 serum.

**Observed-MW:52 kDa**

**Calculated-MW:48 kDa**



Immunohistochemistry of paraffin-embedded rat kidney using Recombinant Phospho-Smad3 (Ser423, Ser425) Monoclonal Antibody at dilution of 1:200.

### Preparation & Storage

<b>Storage</b>	Store at -20°C Valid for 12 months. Avoid freeze / thaw cycles.
<b>Shipping</b>	Ice bag

### Background

The protein encoded by this gene belongs to the SMAD, a family of proteins similar to the gene products of the Drosophila gene *mothers against decapentaplegic* (Mad) and the C. elegans gene Sma. SMAD proteins are signal transducers and transcriptional modulators that mediate multiple signaling pathways. This protein functions as a transcriptional modulator activated by transforming growth factor-beta and is thought to play a role in the regulation of carcinogenesis.

### For Research Use Only