

CK-7 Monoclonal Antibody

catalog number: E-AB-22017

Note: Centrifuge before opening to ensure complete recovery of vial contents.

Description

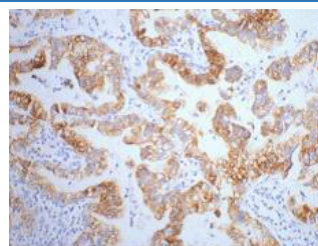
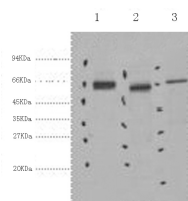
Reactivity	Human;Mouse;Rat
Immunogen	Synthetic Peptide
Host	Mouse
Isotype	IgG
Clone	2B5
Purification	Protein A purification
Buffer	Phosphate buffered solution, pH 7.4, containing 0.05% stabilizer, 0.5% protein protectant and 50% glycerol.

Applications

Recommended Dilution

WB	1:1000-2000
IHC	1:100-1:300
IF	1:50-1:200

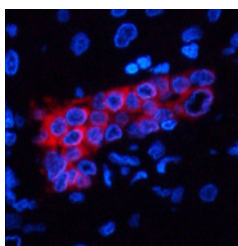
Data



Western Blot analysis of 1) Hela, 2) Mouse kidney, 3) Mouse brain using CK-7 Monoclonal Antibody at dilution of 1:2000. Immunohistochemistry of paraffin-embedded Human lung cancer tissue using CK-7 Monoclonal Antibody at dilution of 1:200.

Observed-MW:54 kDa

Calculated-MW:51 kDa



Immunofluorescence analysis of Human liver tissue using CK-7 Monoclonal Antibody at dilution of 1:200.

Preparation & Storage

Storage	Store at -20°C Valid for 12 months. Avoid freeze / thaw cycles.
Shipping	The product is shipped with ice pack, upon receipt, store it immediately at the temperature recommended.

Background

For Research Use Only

Blocks interferon-dependent interphase and stimulates DNA synthesis in cells. Involved in the translational regulation of the human papillomavirus type 16 E7 mRNA (HPV16 E7).

For Research Use Only

Toll-free: 1-888-852-8623
Web: www.elabscience.com

Tel: 1-832-243-6086
Email: techsupport@elabscience.com

Fax: 1-832-243-6017

Rev. V1.7