

## Recombinant Human ASGR1/ASGPR1 Protein (His Tag)

Catalog Number: PKSH033403

**Note:** Centrifuge before opening to ensure complete recovery of vial contents.

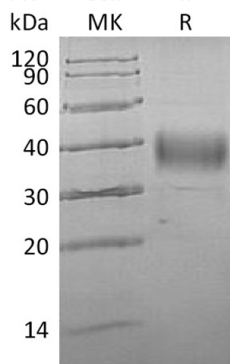
### Description

<b>Species</b>	Human
<b>Source</b>	HEK293 Cells-derived Human ASGR1/ASGPR1 protein Gln62-Ile291, with an C-terminal His
<b>Mol_Mass</b>	27.4 kDa
<b>Accession</b>	P07306
<b>Bio-activity</b>	Not validated for activity

### Properties

<b>Purity</b>	> 95 % as determined by reducing SDS-PAGE.
<b>Endotoxin</b>	< 1.0 EU per µg of the protein as determined by the LAL method.
<b>Storage</b>	Generally, lyophilized proteins are stable for up to 12 months when stored at -20 to -80 °C. Reconstituted protein solution can be stored at 4-8°C for 2-7 days. Aliquots of reconstituted samples are stable at < -20°C for 3 months.
<b>Shipping</b>	This product is provided as lyophilized powder which is shipped with ice packs.
<b>Formulation</b>	Lyophilized from a 0.2 µm filtered solution of 20mM PB, 150mM NaCl, pH 7.2. Normally 5% - 8% trehalose, mannitol and 0.01% Tween 80 are added as protectants before lyophilization. Please refer to the specific buffer information in the printed manual.
<b>Reconstitution</b>	Please refer to the printed manual for detailed information.

### Data



> 95 % as determined by reducing SDS-PAGE.

### Background

Asialoglycoprotein Receptor 1 (ASGPR1) is an endocytic recycling receptor; belongs to the long-form subfamily of the C-type/Ca<sup>2+</sup>-dependent lectin family. ASGPR consists of two noncovalently-linked subunits; ASGPR1 and ASGPR2. ASGPR1 mediates the endocytosis of plasma glycoproteins; recognizes terminal galactose and N-acetylgalactosamine units. When the ligand binds to ASGPR1; results in the complex is internalized and transported to a sorting organelle; then ASGPR1 and ligand can be disassociated; ASGPR1 returns to the cell membrane surface.

### For Research Use Only