

## PE Anti-Mouse CD20 Antibody[SA271G2]

Catalog Number: E-AB-F1403D

Note: Centrifuge before opening to ensure complete recovery of vial contents.

### Description

<b>Reactivity</b>	Mouse
<b>Host</b>	Rat
<b>Isotype</b>	Rat IgG2b, κ
<b>Clone No.</b>	SA271G2
<b>Isotype Control</b>	PE Rat IgG2b, κ Isotype Control[LTF-2] [Product E-AB-F09842D]
<b>Conjugation</b>	PE
<b>Conjugation Information</b>	PE is designed to be excited by the Blue (488 nm), Green (532 nm) and Yellow-Green (561 nm) lasers and detected using an optical filter centered near 575 nm (e.g., a 585/42 nm bandpass filter).
<b>Storage Buffer</b>	Phosphate buffered solution, pH 7.2, containing 0.09% stabilizer.

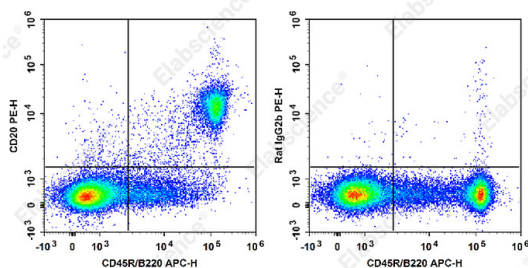
### Applications

FCM

### Recommended usage

Each lot of this antibody is quality control tested by flow cytometric analysis. **The amount of the reagent is suggested to be used 5 μL of antibody per test (million cells in 100 μL staining volume or per 100 μL of whole blood).** Please check your vial before the experiment. Since applications vary, the appropriate dilutions must be determined for individual use.

### Data



Staining of C57BL/6 murine splenocytes cells with APC Anti-Mouse CD45R/B220 Antibody and PE Anti-Mouse CD20 Antibody[SA271G2] (left) or PE Rat IgG2b;κ Isotype Control (right). Total viable cells were used for analysis.

### Preparation & Storage

<b>Storage</b>	Keep as concentrated solution. This product can be stored at 2-8°C for 24 months. Please protected from prolonged exposure to light and do not freeze.
<b>Shipping</b>	Ice bag

### Antigen Information

<b>Uniprot ID</b>	P19437
<b>Gene ID</b>	12482

### For Research Use Only

## Background

CD20 is a 33-37 kD protein, a member of the MS4A family, with four transmembrane spanning regions that present as a homo-oligomeric complexes in the cell surface when associating with MHC class I and II, CD53, CD81, and CD82. CD20 is expressed on B cells and a subset of T cells, but not on plasma cells. CD20 regulates B-cell activation and proliferation. Its ligation promotes transmembrane Ca<sup>2+</sup> trafficking. CD20 is an important therapeutic target in the treatment of B cell lymphomas and leukemias.