

alpha Lactalbumin Monoclonal Antibody

catalog number: E-AB-22042

Note: Centrifuge before opening to ensure complete recovery of vial contents.

Description

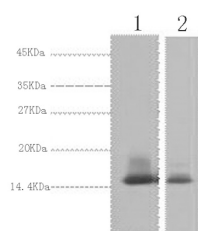
Reactivity	Human
Immunogen	Synthetic Peptide
Host	Mouse
Isotype	IgG
Clone	9C3
Purification	Protein A purification
Conjugation	Unconjugated
buffer	Phosphate buffered solution, pH 7.4, containing 0.05% stabilizer, 0.5% protein protectant and 50% glycerol.

Applications

Recommended Dilution

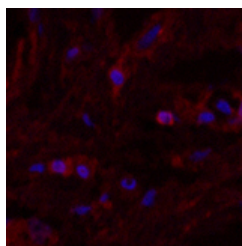
WB	1:500-1:2000
IHC	1:50-300
IF	1:100-1:300

Data

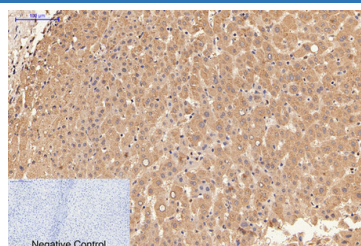


Western Blot analysis of 1) Human Milk, 2) Milk using alpha Lactalbumin Monoclonal Antibody at dilution of 1:3000.

Observed-MV:16 kDa



Immunofluorescence analysis of Human breast tissue using alpha Lactalbumin Monoclonal Antibody at dilution of 1:200.



Immunohistochemistry of paraffin-embedded Human liver tissue using alpha Lactalbumin Monoclonal Antibody at dilution of 1:200.

Preparation & Storage

Storage	Store at -20°C Valid for 12 months. Avoid freeze / thaw cycles.
Shipping	The product is shipped with ice pack, upon receipt, store it immediately at the temperature recommended.

Background

For Research Use Only

alpha Lactalbumin Monoclonal Antibody

catalog number: E-AB-22042



This gene encodes alpha-lactalbumin, a principal protein of milk. Alpha-lactalbumin forms the regulatory subunit of the lactose synthase (LS) heterodimer and beta 1,4-galactosyltransferase (beta4Gal-T1) forms the catalytic component. Together, these proteins enable LS to produce lactose by transferring galactose moieties to glucose. As a monomer, alpha-lactalbumin strongly binds calcium and zinc ions and may possess bactericidal or antitumor activity. A folding variant of alpha-lactalbumin, called HAMLET, likely induces apoptosis in tumor and immature cells.

For Research Use Only

A Reliable Research Partner in Life Science and Medicine
Tel: 400-999-2100

Email: techsupport@elabscience.cn

Web: www.elabscience.cn

Rev. V1.7