

## Recombinant MCM3 Monoclonal Antibody

catalog number: **AN301597L**

**Note:** Centrifuge before opening to ensure complete recovery of vial contents.

### Description

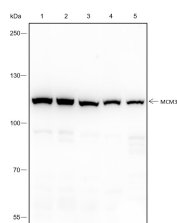
<b>Reactivity</b>	Human;Rat;Mouse
<b>Immunogen</b>	Recombinant human MCM3 fragment
<b>Host</b>	Rabbit
<b>Isotype</b>	IgG, $\kappa$
<b>Clone</b>	A296
<b>Purification</b>	Protein A purified
<b>Buffer</b>	PBS, 50% glycerol, 0.05% Proclin 300, 0.05% protein protectant.

### Applications

### Recommended Dilution

<b>WB</b>	1:500-1:2000
<b>IHC</b>	1:200-1:1000
<b>IP</b>	1:25-1:100

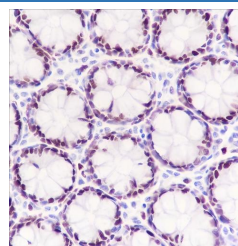
### Data



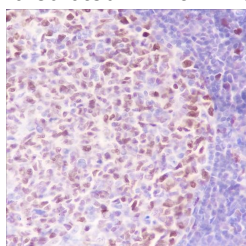
Western Blot with MCM3 Monoclonal Antibody at dilution of 1:2000. Lane 1: HeLa, Lane 2: K562, Lane 3: HepG2, Lane 4: PC-12, Lane 5: NIH-3T3

**Observed-MW:100 kDa**

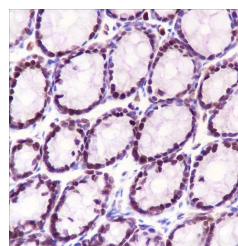
**Calculated-MW:91 kDa**



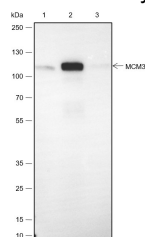
Immunohistochemistry of paraffin-embedded Human colon using MCM3 Monoclonal Antibody at dilution of 1:1000.



Immunohistochemistry of paraffin-embedded Human tonsil using MCM3 Monoclonal Antibody at dilution of 1:1000.



Immunohistochemistry of paraffin-embedded Mouse colon using MCM3 Monoclonal Antibody at dilution of 1:1000.



### For Research Use Only

Toll-free: 1-888-852-8623  
Web: [www.elabscience.com](http://www.elabscience.com)

Tel: 1-832-243-6086  
Email: [techsupport@elabscience.com](mailto:techsupport@elabscience.com)

Fax: 1-832-243-6017

Rev. V1.0

Immunoprecipitation analysis using anti-MCM3 Monoclonal Antibody. Western blot was performed from the immunoprecipitate using MCM3 Monoclonal Antibody at a dilution of 1:100. Lane 1: 5% Input, Lane 2: MCM3 Monoclonal Antibody, Lane 3: Rabbit monoclonal IgG Isotype

**Observed-MW:100 kDa**

**Calculated-MW:91 kDa**

## Preparation & Storage

**Storage** Store at -20°C Valid for 12 months. Avoid freeze / thaw cycles.

**Shipping** Ice bag

## Background

Acts as component of the MCM2-7 complex (MCM complex) which is the putative replicative helicase essential for 'once per cell cycle' DNA replication initiation and elongation in eukaryotic cells. The active ATPase sites in the MCM2-7 ring are formed through the interaction surfaces of two neighboring subunits such that a critical structure of a conserved arginine finger motif is provided in trans relative to the ATP-binding site of the Walker A box of the adjacent subunit. The six ATPase active sites, however, are likely to contribute differentially to the complex helicase activity. Required for DNA replication and cell proliferation.

## For Research Use Only

Toll-free: 1-888-852-8623  
Web: [www.elabscience.com](http://www.elabscience.com)

Tel: 1-832-243-6086  
Email: [techsupport@elabscience.com](mailto:techsupport@elabscience.com)

Fax: 1-832-243-6017

Rev. V1.0