

S100A8 Polyclonal Antibody

catalog number: E-AB-70341

Note: Centrifuge before opening to ensure complete recovery of vial contents.

Description

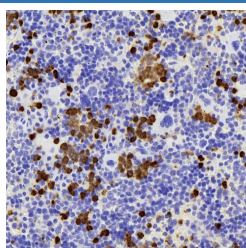
Reactivity	Mouse;Rat
Immunogen	Recombinant protein corresponding to Mouse S100A8
Host	Rabbit
Isotype	IgG
Purification	Affinity purification
Conjugation	Unconjugated
Buffer	Phosphate buffered solution, pH 7.4, containing 0.05% stabilizer, 1% protein protectant and 50% glycerol.

Applications

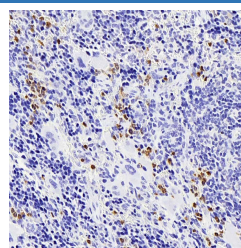
Recommended Dilution

IHC	1:200-1:800
------------	-------------

Data



Immunohistochemistry analysis of paraffin-embedded mouse immunized spleen using S100A8 Polyclonal Antibody at dilution of 1:400.



Immunohistochemistry analysis of paraffin-embedded rat spleen using S100A8 Polyclonal Antibody at dilution of 1:400.

Preparation & Storage

Storage	Store at -20°C Valid for 12 months. Avoid freeze / thaw cycles.
Shipping	The product is shipped with ice pack, upon receipt, store it immediately at the temperature recommended.

Background

The protein encoded by this gene is a member of the S100 family of proteins containing 2 EF-hand calcium-binding motifs. S100 proteins are localized in the cytoplasm and/or nucleus of a wide range of cells, and involved in the regulation of a number of cellular processes such as cell cycle progression and differentiation. S100 genes include at least 13 members which are located as a cluster on chromosome 1q21. This protein may function in the inhibition of casein kinase and as a cytokine. Altered expression of this protein is associated with the disease cystic fibrosis. Multiple transcript variants encoding different isoforms have been found for this gene.