

(KO Validated) CDK4 Polyclonal Antibody

catalog number: E-AB-93172

Note: Centrifuge before opening to ensure complete recovery of vial contents.

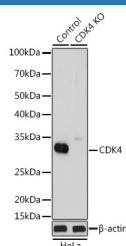
Description

Reactivity	Human;Mouse;Rat
Immunogen	A synthetic peptide of human CDK4
Host	Rabbit
Isotype	IgG
Purification	Affinity purification
Buffer	Phosphate buffered solution, pH 7.4, containing 0.05% stabilizer and 50% glycerol.

Applications Recommended Dilution

WB	1:500-1:2000
IHC	1:50-1:200
IP	1:50-1:200

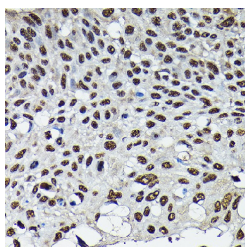
Data



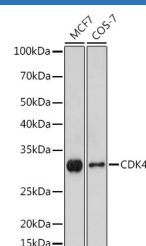
Western blot analysis of extracts from normal (control) and CDK4 knockout (KO) HeLa cells, using CDK4 Polyclonal Antibody at 1:1000 dilution.

Observed-MW:30 kDa

Calculated-MW:20 kDa/33 kDa



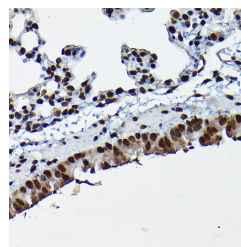
Immunohistochemistry of paraffin-embedded human lung cancer using CDK4 Polyclonal Antibody at dilution of 1:100 (40x lens). Perform high pressure antigen retrieval with 10 mM citrate buffer pH 6.0 before commencing with IHC staining protocol.



Western blot analysis of extracts of various cell lines using CDK4 Polyclonal Antibody at 1:1000 dilution.

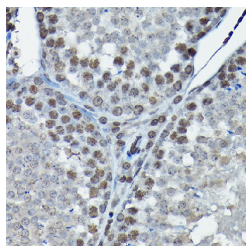
Observed-MW:30 kDa

Calculated-MW:20 kDa/33 kDa

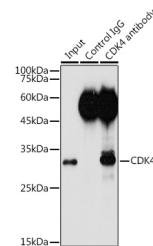


Immunohistochemistry of paraffin-embedded mouse lung using CDK4 Polyclonal Antibody at dilution of 1:100 (40x lens). Perform high pressure antigen retrieval with 10 mM citrate buffer pH 6.0 before commencing with IHC staining protocol.

For Research Use Only



Immunohistochemistry of paraffin-embedded rat testis using CDK4 Polyclonal Antibody at dilution of 1:100 (40x lens). Perform high pressure antigen retrieval with 10 mM citrate buffer pH 6.0 before commencing with IHC staining protocol.



Immunoprecipitation analysis of 300ug extracts of HeLa cells using 3ug CDK4 Polyclonal Antibody. Western blot was performed from the immunoprecipitate using CDK4 Polyclonal Antibody at a dilution of 1:1000.

Observed-MW:30 kDa

Calculated-MW:20 kDa/33 kDa

Preparation & Storage

Storage

Store at -20°C Valid for 12 months. Avoid freeze / thaw cycles.

Shipping

The product is shipped with ice pack, upon receipt, store it immediately at the temperature recommended.

Background

The protein encoded by this gene is a member of the Ser/Thr protein kinase family. This protein is highly similar to the gene products of *S. cerevisiae* cdc28 and *S. pombe* cdc2. It is a catalytic subunit of the protein kinase complex that is important for cell cycle G1 phase progression. The activity of this kinase is restricted to the G1-S phase, which is controlled by the regulatory subunits D-type cyclins and CDK inhibitor p16(INK4a). This kinase was shown to be responsible for the phosphorylation of retinoblastoma gene product (Rb). Mutations in this gene as well as in its related proteins including D-type cyclins, p16(INK4a) and Rb were all found to be associated with tumorigenesis of a variety of cancers. Multiple polyadenylation sites of this gene have been reported.

For Research Use Only