

Recombinant Human CTCF Protein

Catalog Number: PKSH033136

Note: Centrifuge before opening to ensure complete recovery of vial contents.

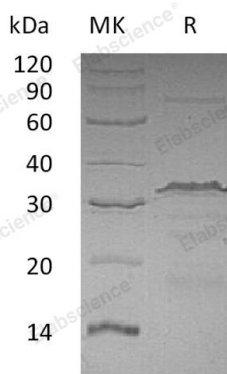
Description

Species	Human
Source	E.coli-derived Human CTCF protein Met 1-Ile154
Calculated MW	16.9 kDa
Observed MW	35-40 kDa
Accession	P49711
Bio-activity	Not validated for activity

Properties

Purity	> 95 % as determined by reducing SDS-PAGE.
Endotoxin	< 1.0 EU per µg of the protein as determined by the LAL method.
Storage	Generally, lyophilized proteins are stable for up to 12 months when stored at -20 to -80°C. Reconstituted protein solution can be stored at 4-8°C for 2-7 days. Aliquots of reconstituted samples are stable at < -20°C for 3 months.
Shipping	This product is provided as lyophilized powder which is shipped with ice packs.
Formulation	Lyophilized from a 0.2 µm filtered solution of PBS, pH 7.4. Normally 5% - 8% trehalose, mannitol and 0.01% Tween 80 are added as protectants before lyophilization.
Reconstitution	Please refer to the specific buffer information in the printed manual. Please refer to the printed manual for detailed information.

Data



> 95 % as determined by reducing SDS-PAGE.

Background

Transcriptional Repressor CTCF (CTCF) belongs to the CTCF Zinc-Finger Protein family. CTCF contains twelve C2H2-type zinc fingers and interacts with CHD8. CTCF is widely expressed in many tissues, and it is absent in primary spermatocytes. CTCF is involved in transcriptional regulation by binding to chromatin insulators and preventing interaction between promoter and nearby enhancers and silencers. CTCF plays an essential role in oocyte and preimplantation embryo development by activating or repressing transcription. In addition, CTCF is also indispensable in the epigenetic regulation and chromatin remodeling.

For Research Use Only

Toll-free: 1-888-852-8623
Web: www.elabscience.com

Tel: 1-832-243-6086
Email: techsupport@elabscience.com

Fax: 1-832-243-6017