

Recombinant Human IL2Ra/CD25 Protein (His Tag)

Catalog Number: PKSH033624

Note: Centrifuge before opening to ensure complete recovery of vial contents.

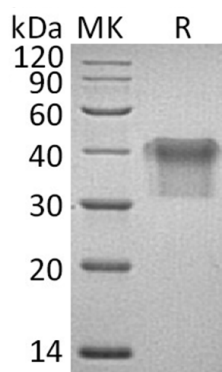
Description

| | |
|----------------------|------------------------------------------------------------------------------------|
| Species | Human |
| Source | HEK293 Cells-derived Human IL2Ra/CD25 protein Glu22-Cys213, with an C-terminal His |
| Calculated MW | 22.8 kDa |
| Observed MW | 35-44 kDa |
| Accession | P01589 |
| Bio-activity | Not validated for activity |

Properties

| | |
|-----------------------|----------------------------------------------------------------------------------------------------------------------------------------------------------------------------------------------------------------------------------------|
| Purity | > 95 % as determined by reducing SDS-PAGE. |
| Endotoxin | < 1.0 EU per µg of the protein as determined by the LAL method. |
| Storage | Generally, lyophilized proteins are stable for up to 12 months when stored at -20 to -80 °C. Reconstituted protein solution can be stored at 4-8°C for 2-7 days. Aliquots of reconstituted samples are stable at < -20°C for 3 months. |
| Shipping | This product is provided as lyophilized powder which is shipped with ice packs. |
| Formulation | Lyophilized from a 0.2 µm filtered solution of 10mM HEPES, 50mM NaCl, pH7.2. Normally 5% - 8% trehalose, mannitol and 0.01% Tween 80 are added as protectants before lyophilization. |
| | Please refer to the specific buffer information in the printed manual. |
| Reconstitution | Please refer to the printed manual for detailed information. |

Data



> 95 % as determined by reducing SDS-PAGE.

Background

Interleukin-2 receptor subunit alpha (IL2RA) is a single-pass type I membrane protein; contains 2 Sushi (CCP/SCR) domains. The interleukin 2 (IL2) receptor alpha (IL2RA) and beta (IL2RB) chains; together with the common gamma chain (IL2RG); constitute the high-affinity IL2 receptor. Homodimeric alpha chains (IL2RA) result in low-affinity receptor; while homodimeric beta (IL2RB) chains produce a medium-affinity receptor. Normally an integral-membrane protein; soluble IL2RA has been isolated and determined to result from extracellular proteolysis.