

Recombinant Human Kallikrein 1/KLK1 Protein (His Tag)

Catalog Number: PKSH032664

Note: Centrifuge before opening to ensure complete recovery of vial contents.

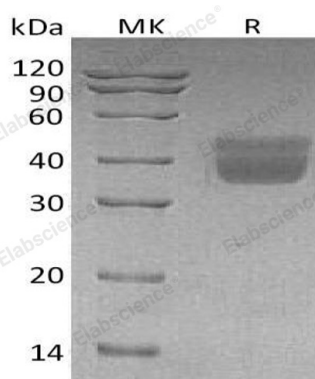
Description

Species	Human
Source	HEK293 Cells-derived Human Kallikrein 1;KLK1 protein Pro19-Ser262, with an C-terminal His
Calculated MW	28.2 kDa
Observed MW	38-55 kDa
Accession	AAH05313.1
Bio-activity	Not validated for activity

Properties

Purity	> 95 % as determined by reducing SDS-PAGE.
Concentration	Subject to label value.
Endotoxin	< 1.0 EU per µg of the protein as determined by the LAL method.
Storage	Store at < -20°C, stable for 6 months. Please minimize freeze-thaw cycles.
Shipping	This product is provided as liquid. It is shipped at frozen temperature with blue ice/ gel packs. Upon receipt, store it immediately at < - 20°C.
Formulation	Supplied as a 0.2 µm filtered solution of 20mM Tris-HCl, 150mM NaCl, 2mM CaCl ₂ , pH 8.0.

Data



> 95 % as determined by reducing SDS-PAGE.

Background

Kallikrein-1 (KLK1) is a member of human tissue Kallikrein family. Human KLK1 precursor contains a signal peptide (residues 1 to 18), a short pro peptide (residues 19 to 24) and a mature chain (residues 25 to 262). The function of KLK1 is to cleave Kininogen in order to release the vasoactive Kinin peptide (Lysyl-Bradykinin or Bradykinin). The Kinin peptide controls blood pressure reduction, vasodilation, smooth muscle relaxation and contraction, pain induction and inflammation. KLK1 also plays a role in angiogenesis and tumorigenesis.

For Research Use Only

Toll-free: 1-888-852-8623
Web: www.elabscience.com

Tel: 1-832-243-6086
Email: techsupport@elabscience.com

Fax: 1-832-243-6017