

IFI44 Polyclonal Antibody

catalog number: **E-AB-63040**

Note: Centrifuge before opening to ensure complete recovery of vial contents.

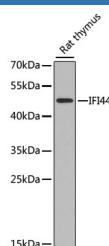
Description

Reactivity	Human;Rat
Immunogen	A synthetic peptide of mouse IFI44
Host	Rabbit
Isotype	IgG
Purification	Affinity purification
Buffer	Phosphate buffered solution, pH 7.4, containing 0.05% stabilizer and 50% glycerol.

Applications Recommended Dilution

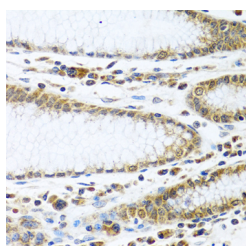
WB	1:500-1:2000
IHC	1:100-1:200
IF	1:50-1:200

Data

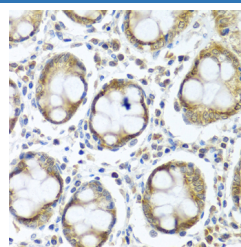


Western blot analysis of extracts of Rat thymus using IFI44 Polyclonal Antibody at dilution of 1:1000.

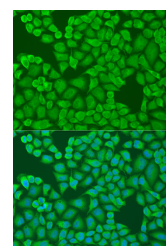
Observed-MV:50 kDa
Calculated-MV:47 kDa



Immunohistochemistry of paraffin-embedded Human stomach using IFI44 Polyclonal Antibody at dilution of 1:100 (40x lens).



Immunohistochemistry of paraffin-embedded Human colon using IFI44 Polyclonal Antibody at dilution of 1:100 (40x lens).



Immunofluorescence analysis of U2OS cells using IFI44 Polyclonal Antibody at dilution of 1:100. Blue: DAPI for nuclear staining.

Preparation & Storage

Storage	Store at -20°C Valid for 12 months. Avoid freeze / thaw cycles.
Shipping	The product is shipped with ice pack, upon receipt, store it immediately at the temperature recommended.

Background

IFI44 (Interferon Induced Protein 44) is a Protein Coding gene. An important paralog of this gene is IFI44L.

For Research Use Only