

# Recombinant Human NECTIN4/Nectin 4 protein (His Tag)

Catalog Number: PDMH100416



**Note:** Centrifuge before opening to ensure complete recovery of vial contents.

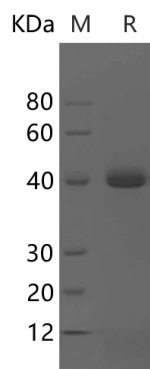
## Description

<b>Species</b>	Human
<b>Mol_Mass</b>	38.3 kDa
<b>Accession</b>	Q96NY8
<b>Bio-activity</b>	Not validated for activity

## Properties

<b>Purity</b>	> 95% as determined by reducing SDS-PAGE.
<b>Endotoxin</b>	< 1.0 EU/mg of the protein as determined by the LAL method
<b>Storage</b>	Generally, lyophilized proteins are stable for up to 12 months when stored at -20 to -80 °C. Reconstituted protein solution can be stored at 4-8°C for 2-7 days. Aliquots of reconstituted samples are stable at < -20°C for 3 months.
<b>Shipping</b>	This product is provided as lyophilized powder which is shipped with ice packs.
<b>Formulation</b>	Lyophilized from a 0.2 µm filtered solution in PBS with 5% Trehalose and 5% Mannitol.
<b>Reconstitution</b>	It is recommended that sterile water be added to the vial to prepare a stock solution of 0.5 mg/mL. Concentration is measured by UV-Vis.

## Data



> 95 % as determined by reducing SDS-PAGE.

## Background

Nectin-4 (PVRL4) is a type I transmembrane glycoprotein which belongs to the nectin family of Ig superfamily proteins. It contains two Ig-like C2-type domains and one Ig-like V-type domain. PVRL4 seems to be involved in cell adhesion through trans-homophilic and-heterophilic interactions, the latter including specifically interactions with nectin-1. It does not act as receptor for alpha-herpesvirus entry into cells. It is predominantly expressed in placenta, the embryo and breast carcinoma. But it is not detected in normal breast epithelium. The soluble form is produced by proteolytic cleavage at the cell surface (shedding), probably by ADAM17. Mutations in this gene are the cause of ectodermal dysplasia-syndactyly syndrome type 1, an autosomal recessive disorder.

## For Research Use Only

A Reliable Research Partner in Life Science and Medicine  
Tel:400-999-2100

Email:[techsupport@elabscience.cn](mailto:techsupport@elabscience.cn)

Web:[www.elabscience.cn](http://www.elabscience.cn)

Rev. V1.2