

CAB39L Polyclonal Antibody

Catalog Number: E-AB-14809



Note: Centrifuge before opening to ensure complete recovery of vial contents.

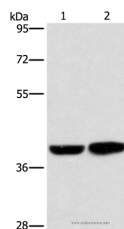
Description

Reactivity	Human, Mouse
Immunogen	Recombinant protein of human CAB39L
Host	Rabbit
Isotype	IgG
Purification	Affinity purification
Conjugation	Unconjugated
Formulation	PBS with 0.05% sodium azide and 50% glycerol, PH7.4

Applications Recommended Dilution

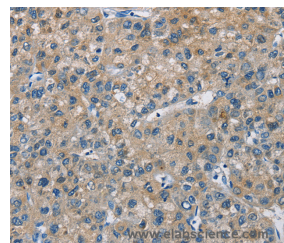
WB	1:500-1:2000
IHC	1:25-1:100

Data

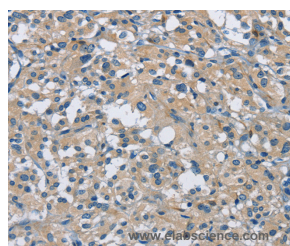


Western Blot analysis of Human fetal brain tissue and 231 cell using CAB39L Polyclonal Antibody at dilution of 1:350

Calculated Mw: 39kDa



Immunohistochemistry of paraffin-embedded Human liver cancer using CAB39L Polyclonal Antibody at dilution of 1:30



Immunohistochemistry of paraffin-embedded Human thyroid cancer using CAB39L Polyclonal Antibody at dilution of 1:30

Preparation & Storage

Storage Store at -20°C. Avoid freeze / thaw cycles.

Background

Calcium-binding protein 39-like is a protein that in humans is encoded by the CAB39L gene. CAB39L (calcium binding protein 39-like), also known as MO25L (MO25-like) or MO2L, is a 337 amino acid protein that is similar to MO25 and is found in the serum of nearly half of all patients diagnosed with acute monocytic leukemia. This suggests a role for

For Research Use Only

A Reliable Research Partner in Life Science and Medicine

Toll-free: 1-888-852-8623

Tel: 1-832-243-6086

Fax: 1-832-243-6017

Web: www.elabscience.com

Email: techsupport@elabscience.com

CAB39L Polyclonal Antibody

Catalog Number: E-AB-14809



CAB39L in carcinogenesis.

For Research Use Only

A Reliable Research Partner in Life Science and Medicine

Toll-free: 1-888-852-8623

Tel: 1-832-243-6086

Fax: 1-832-243-6017

Web: www.elabscience.com

Email: techsupport@elabscience.com