

Recombinant Human INPP1 Protein (His Tag)

Catalog Number:PKSH032592



Note: Centrifuge before opening to ensure complete recovery of vial contents.

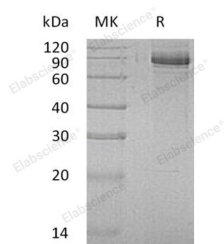
Description

Synonyms	Inositol Polyphosphate 1-Phosphatase;IPP;IPPase;INPP1
Species	Human
Expression Host	HEK293 Cells
Sequence	Met 1-Thr399
Accession	P49441
Calculated Molecular Weight	45.0 kDa
Observed molecular weight	40-50 kDa
Tag	C-His

Properties

Purity	> 95 % as determined by reducing SDS-PAGE.
Endotoxin	< 1.0 EU per µg of the protein as determined by the LAL method.
Storage	Generally, lyophilized proteins are stable for up to 12 months when stored at -20 to -80°C. Reconstituted protein solution can be stored at 4-8°C for 2-7 days. Aliquots of reconstituted samples are stable at < -20°C for 3 months.
Shipping	This product is provided as lyophilized powder which is shipped with ice packs.
Formulation	Lyophilized from a 0.2 µm filtered solution of 20mM PB, 150mM NaCl, 1mM EDTA, 5% Trehalose, pH 7.4. Normally 5 % - 8 % trehalose, mannitol and 0.01% Tween80 are added as protectants before lyophilization. Please refer to the specific buffer inform
Reconstitution	Please refer to the printed manual for detailed information.

Data



> 95 % as determined by reducing SDS-PAGE.

Background

Inositol Polyphosphate 1-Phosphatase (INPP1) is a member of the inositol monophosphatase family. INPP1 is widely expressed in tissues, with highest expression levels observed in the pancreas and kidney. INPP1 is inhibited by Li⁺. Removing the phosphate group at position 1 of the inositol ring from the polyphosphates inositol 1,4-bisphosphate and inositol 1,3,4-trisphosphosphate. INPP1 is involved in signal transduction and phosphatidylinositol signaling pathway.

For Research Use Only

A Reliable Research Partner in Life Science and Medicine

Toll-free: 1-888-852-8623

Web: www.elabscience.com

Tel: 1-832-243-6086

Email: techsupport@elabscience.com

Fax: 1-832-243-6017