

## ANAPC13 Polyclonal Antibody

**catalog number: E-AB-93025**

**Note:** Centrifuge before opening to ensure complete recovery of vial contents.

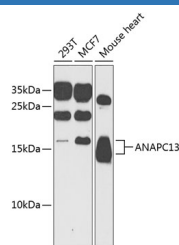
### Description

<b>Reactivity</b>	Human;Mouse
<b>Immunogen</b>	Recombinant fusion protein of human ANAPC13
<b>Host</b>	Rabbit
<b>Isotype</b>	IgG
<b>Purification</b>	Affinity purification
<b>Buffer</b>	Phosphate buffered solution, pH 7.4, containing 0.05% stabilizer and 50% glycerol.

### Applications

<b>WB</b>	1:500-1:2000
-----------	--------------

### Data



Western blot analysis of extracts of various cell lines using ANAPC13 Polyclonal Antibody at 1:1000 dilution.

**Observed-MV:15 kDa**

**Calculated-MV:8 kDa**

### Preparation & Storage

<b>Storage</b>	Store at -20°C Valid for 12 months. Avoid freeze / thaw cycles.
<b>Shipping</b>	The product is shipped with ice pack, upon receipt, store it immediately at the temperature recommended.

### Background

This gene encodes a component of the anaphase promoting complex, a large ubiquitin-protein ligase that controls cell cycle progression by regulating the degradation of cell cycle regulators such as B-type cyclins. The encoded protein is evolutionarily conserved and is required for the integrity and ubiquitin ligase activity of the anaphase promoting complex. Pseudogenes and splice variants have been found for this gene; however, the biological validity of some of the splice variants has not been determined.

### For Research Use Only