

ELAC1 Polyclonal Antibody

Catalog Number: E-AB-52911

Note: Centrifuge before opening to ensure complete recovery of vial contents.

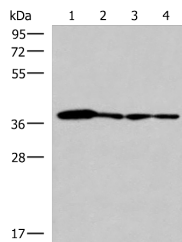
Description

Reactivity	Human, Mouse
Immunogen	Fusion protein of human ELAC1
Host	Rabbit
Isotype	IgG
Purification	Antigen affinity purification
Conjugation	Unconjugated
Formulation	PBS with 0.05% NaN ₃ and 40% Glycerol, pH7.4

Applications Recommended Dilution

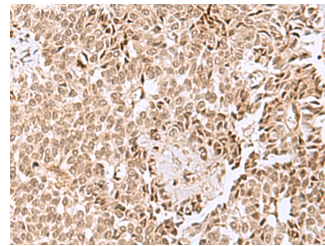
WB	1:1000-1:5000
IHC	1:50-1:300
ELISA	1:5000-1:10000

Data



Western blot analysis of 293T PC3 A549 and HepG2 cell lysates using ELAC1 Polyclonal Antibody at dilution of 1:800

Observed Mw: Refer to figures
Calculated Mw: 40 kDa



Immunohistochemistry of paraffin-embedded Human ovarian cancer tissue using ELAC1 Polyclonal Antibody at dilution of 1:50 (×200)

Preparation & Storage

Storage Store at -20°C. Avoid freeze / thaw cycles.

Background

Zinc phosphodiesterase, which displays some tRNA 3'-processing endonuclease activity. Probably involved in tRNA maturation, by removing a 3'-trailer from precursor tRNA.

For Research Use Only

A Reliable Research Partner in Life Science and Medicine

Toll-free: 1-888-852-8623

Web: www.elabscience.com

Tel: 1-832-243-6086

Email: techsupport@elabscience.com

Fax: 1-832-243-6017