

CRMP3 Polyclonal Antibody

catalog number: E-AB-15569

Note: Centrifuge before opening to ensure complete recovery of vial contents.

Description

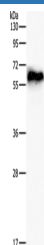
Reactivity	Human;Mouse;Rat
Immunogen	Synthetic peptide of human DPYSL4
Host	Rabbit
Isotype	IgG
Purification	Affinity purification
Conjugation	Unconjugated
buffer	Phosphate buffered solution, pH 7.4, containing 0.05% stabilizer and 50% glycerol.

Applications

Recommended Dilution

WB	1:500-1:2000
-----------	--------------

Data



Western Blot analysis of Human fetal brain tissue using
CRMP3 Polyclonal Antibody at dilution of 1:500

Calculated-MV:62 kDa

Preparation & Storage

Storage	Store at -20°C Valid for 12 months. Avoid freeze / thaw cycles.
Shipping	The product is shipped with ice pack, upon receipt, store it immediately at the temperature recommended.

Background

Collapsin response mediator protein 3 is an enzyme that in humans is encoded by the CRMP3 gene. It is necessary for signaling by class 3 semaphorins and subsequent remodeling of the cytoskeleton. And plays a role in axon guidance, neuronal growth cone collapse and cell migration.

For Research Use Only