

# Recombinant Human MAP1D Protein (His Tag)

Catalog Number: PKSH032749

**Note:** Centrifuge before opening to ensure complete recovery of vial contents.

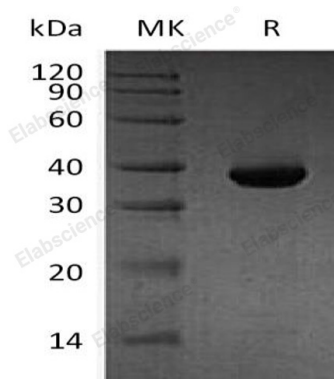
## Description

<b>Species</b>	Human
<b>Mol_Mass</b>	35.4 kDa
<b>Accession</b>	Q6UB28
<b>Bio-activity</b>	Not validated for activity

## Properties

<b>Purity</b>	> 95 % as determined by reducing SDS-PAGE.
<b>Endotoxin</b>	< 1.0 EU per µg of the protein as determined by the LAL method.
<b>Storage</b>	Store at < -20°C, stable for 6 months. Please minimize freeze-thaw cycles.
<b>Shipping</b>	This product is provided as liquid. It is shipped at frozen temperature with blue ice/gel packs. Upon receipt, store it immediately at < - 20°C.
<b>Formulation</b>	Supplied as a 0.2 µm filtered solution of 20mM Tris-HCl, pH 8.0.
<b>Reconstitution</b>	Not Applicable

## Data



> 95 % as determined by reducing SDS-PAGE.

## Background

Methionine Aminopeptidase 1D (METAP1D) is a mitochondrion protein that belongs to the peptidase M24A family. METAP1D is overexpressed at the protein level in colon cancer cell lines and colon tumors as compared to normal tissues. N-terminal methionine removal is an important cellular process required for proper biological activity, subcellular localization, and eventual degradation of many proteins. METAP1D is also active with zinc, manganese or divalent ions. It may also play an important role in colon tumorigenesis.

## For Research Use Only