

# Cytochrome b Polyclonal Antibody

Catalog Number: E-AB-13180



**Note:** Centrifuge before opening to ensure complete recovery of vial contents.

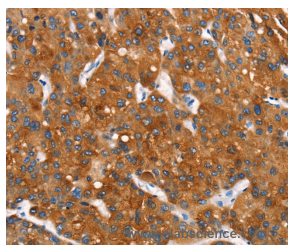
## Description

<b>Reactivity</b>	Human
<b>Immunogen</b>	Synthetic peptide of human MT-CYB
<b>Host</b>	Rabbit
<b>Isotype</b>	IgG
<b>Purification</b>	Affinity purification
<b>Conjugation</b>	Unconjugated
<b>Formulation</b>	PBS with 0.05% sodium azide and 50% glycerol, PH7.4

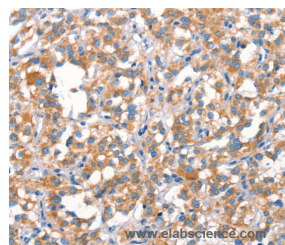
## Applications Recommended Dilution

<b>IHC</b>	1:50-1:200
------------	------------

## Data



Immunohistochemistry of paraffin-embedded Human liver cancer tissue using Cytochrome b Polyclonal Antibody at dilution 1:30



Immunohistochemistry of paraffin-embedded Human thyroid cancer tissue using Cytochrome b Polyclonal Antibody at dilution 1:30

## Preparation & Storage

**Storage** Store at -20°C. Avoid freeze / thaw cycles.

## Background

Cytochrome b is a component of the ubiquinol-cytochrome c reductase complex, which is a respiratory chain that generates an electrochemical potential, coupled to ATP synthesis. The principal components of the b-c1 complex are cytochrome b, cytochrome c1, and the rieske protein. Cytochrome b possesses two heme groups, which are not covalently attached to the protein. Mutations in cytochrome b are associated with Leber's hereditary optic neuropathy and with myopathy.

## For Research Use Only

A Reliable Research Partner in Life Science and Medicine

Toll-free: 1-888-852-8623

Web: [www.elabscience.com](http://www.elabscience.com)

Tel: 1-832-243-6086

Email: [techsupport@elabscience.com](mailto:techsupport@elabscience.com)

Fax: 1-832-243-6017