

Recombinant Human Semaphorin 4D/SEMA4D Protein (His Tag)

DIA • AN[®]
by Elabscience

Catalog Number:PKSH030994

Note: Centrifuge before opening to ensure complete recovery of vial contents.

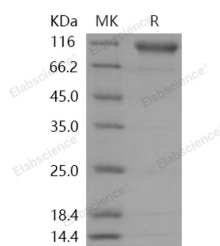
Description

Synonyms	Semaphorin-4D;A8;BB18;GR3;CD100;C9orf164;CD100;coll-4;M-sema-G;SEMAJ
Species	Human
Expression Host	HEK293 Cells
Sequence	Met 1-Arg 734
Accession	Q92854-1
Calculated Molecular Weight	80.7 kDa
Observed molecular weight	110 kDa
Tag	C-His
Bioactivity	Immobilized human SEMA4D-His at 10 µg/ml (100 µl/well) can bind mouse PTPRC-Fc with a linear range of 0.625-5 µg/ml.

Properties

Purity	> 92 % as determined by reducing SDS-PAGE.
Endotoxin	< 1.0 EU per µg of the protein as determined by the LAL method.
Storage	Generally, lyophilized proteins are stable for up to 12 months when stored at -20 to -80°C. Reconstituted protein solution can be stored at 4-8°C for 2-7 days. Aliquots of reconstituted samples are stable at < -20°C for 3 months.
Shipping	This product is provided as lyophilized powder which is shipped with ice packs.
Formulation	Lyophilized from sterile PBS, pH 7.4 Normally 5 % - 8 % trehalose, mannitol and 0.01 % Tween80 are added as protectants before lyophilization. Please refer to the specific buffer information in the printed manual.
Reconstitution	Please refer to the printed manual for detailed information.

Data



> 92 % as determined by reducing SDS-PAGE.

Background

SIGLEC5 contains 2 Ig-like C2-type (immunoglobulin-like) domains and 1 Ig-like V-type (immunoglobulin-like) domain. It belongs to the immunoglobulin superfamily and SIGLEC (sialic acid binding Ig-like lectin) family. SIGLEC5 is expressed by monocytic/myeloid lineage cells. It is found at high levels in peripheral blood leukocytes, spleen, bone marrow and at lower levels in lymph node, lung, appendix, placenta, pancreas and thymus. It is also expressed by monocytes and neutrophils but absent from leukemic cell lines representing early stages of myelomonocytic differentiation. SIGLEC5 is a putative adhesion molecule that mediates sialic-acid dependent binding to cells. It binds

For Research Use Only

A Reliable Research Partner in Life Science and Medicine

Toll-free: 1-888-852-8623

Web: www.elabscience.com

Tel: 1-832-243-6086

Email: techsupport@elabscience.com

Fax: 1-832-243-6017

Recombinant Human Semaphorin 4D/SEMA4D Protein ^{dg} (His Tag)



Catalog Number:PKSH030994

equally to alpha-2,3-linked and alpha-2,6-linked sialic acid. The sialic acid recognition site may be masked by cis interactions with sialic acids on the same cell surface.

For Research Use Only

A Reliable Research Partner in Life Science and Medicine

Toll-free: 1-888-852-8623

Tel: 1-832-243-6086

Fax: 1-832-243-6017

Web: www.elabscience.com

Email: techsupport@elabscience.com