

## Recombinant Human SRC/Proto-oncogene c-Src Protein (His Tag)

Catalog Number: PDEH100688

**Note:** Centrifuge before opening to ensure complete recovery of vial contents.

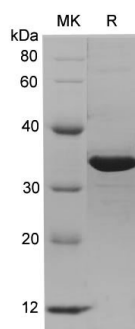
### Description

<b>Species</b>	Human
<b>Source</b>	E.coli-derived Human SRC protein Gly2-Gly287, with an N-terminal His
<b>Calculated MW</b>	31.2 kDa
<b>Observed MW</b>	32.4 kDa
<b>Accession</b>	P12931-1
<b>Bio-activity</b>	Not validated for activity

### Properties

<b>Purity</b>	> 90% as determined by reducing SDS-PAGE.
<b>Endotoxin</b>	< 10 EU/mg of the protein as determined by the LAL method
<b>Storage</b>	Generally, lyophilized proteins are stable for up to 12 months when stored at -20 to -80 °C. Reconstituted protein solution can be stored at 4-8°C for 2-7 days. Aliquots of reconstituted samples are stable at < -20°C for 3 months.
<b>Shipping</b>	This product is provided as lyophilized powder which is shipped with ice packs.
<b>Formulation</b>	Lyophilized from a 0.2 µm filtered solution in PBS with 5% Trehalose and 5% Mannitol.
<b>Reconstitution</b>	It is recommended that sterile water be added to the vial to prepare a stock solution of 0.5 mg/mL. Concentration is measured by UV-Vis.

### Data



> 90 % as determined by reducing SDS-PAGE.

### Background

Proto-oncogene tyrosine-protein kinase SRC is a hydrophobic protein belonging to the SRC family kinase including nine members that is a family of non-receptor tyrosine kinases. SRC protein may exist in different forms: C-SRC and V-SRC. C-SRC is only activated under certain circumstances where it is required such as growth factor signaling, while V-SRC is constitutively active as opposed to normal SRC (C-SRC). Thus, V-SRC is an instructive example of an oncogene protein kinase whereas C-SRC is a proto-oncogene protein kinase. Inhibition of SRC with NR2A tyrosine phosphorylation mediated by PSD-95 may contribute to the lithium-induced downregulation of NMDA receptor function and provide neuroprotection against excitotoxicity.

### For Research Use Only