

## Recombinant Human FGL1 (C-Fc-Avi) Biotinylated

**Catalog Number:** PKSH033855

**Note:** Centrifuge before opening to ensure complete recovery of vial contents.

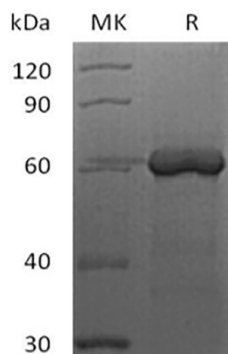
### Description

<b>Species</b>	Human
<b>Source</b>	HEK293 Cells-derived Human FGL1 protein Leu23-Ile312, with an C-terminal Fc & Avi
<b>Calculated MW</b>	62.7 kDa
<b>Observed MW</b>	60 kDa
<b>Accession</b>	Q08830
<b>Bio-activity</b>	Not validated for activity

### Properties

<b>Purity</b>	> 90 % as determined by reducing SDS-PAGE.
<b>Endotoxin</b>	< 1.0 EU per µg of the protein as determined by the LAL method.
<b>Storage</b>	Generally, lyophilized proteins are stable for up to 12 months when stored at -20 to -80°C. Reconstituted protein solution can be stored at 4-8°C for 2-7 days. Aliquots of reconstituted samples are stable at < -20°C for 3 months.
<b>Shipping</b>	This product is provided as lyophilized powder which is shipped with ice packs.
<b>Formulation</b>	Lyophilized from a 0.2 µm filtered solution of PBS, 5% Trehalose, pH 7.4. Normally 5% - 8% trehalose, mannitol and 0.01% Tween 80 are added as protectants before lyophilization.
	Please refer to the specific buffer information in the printed manual.
<b>Reconstitution</b>	Please refer to the printed manual for detailed information.

### Data



> 90 % as determined by reducing SDS-PAGE.

### Background

Fibrinogen-like protein 1 (FGL1) is also known as HP-041, Hepassocin, HFREP-1, LFIRE-1, is a liver-specific secreted protein belonging to the fibronogen superfamily, whose members share a fibrinogen domain at their C-termini. It is secreted by the liver and functions as a mitogen for hepatocytes. Hepassocin may play a role in the development of hepatocellular carcinomas. Hepassocin is a disulfide-linked homodimeric protein with a C-terminal fibrinogen domain. It is reported that it is a major immune inhibitory ligand of LAG-3.

### For Research Use Only

Toll-free: 1-888-852-8623  
Web: [www.elabscience.com](http://www.elabscience.com)

Tel: 1-832-243-6086  
Email: [techsupport@elabscience.com](mailto:techsupport@elabscience.com)

Fax: 1-832-243-6017