

## Galectin 3 Polyclonal Antibody

catalog number: **E-AB-40350**

**Note:** Centrifuge before opening to ensure complete recovery of vial contents.

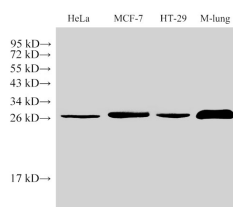
### Description

<b>Reactivity</b>	Human;Mouse;Rat
<b>Immunogen</b>	Recombinant Mouse Galectin-3 protein
<b>Host</b>	Rabbit
<b>Isotype</b>	IgG
<b>Purification</b>	Antigen Affinity Purification
<b>Buffer</b>	PBS with 0.05% Proclin300, 1% protective protein and 50% glycerol, pH7.4

### Applications

<b>WB</b>	1:1000-1:2000
<b>IHC</b>	1:100-1:400

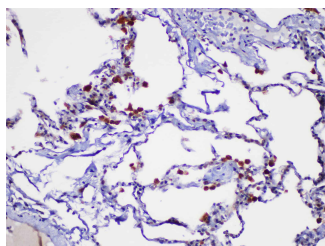
### Data



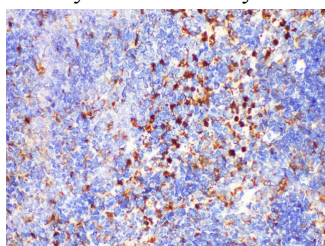
Western Blot analysis of 1)HeLa, 2)MCF-7, 3)HT-29, 4)Mouse Lung using LGALS3 Polyclonal Antibody at dilution of 1:1000

**Observed-MW:27 kDa**

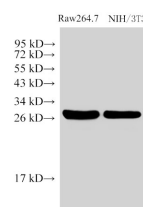
**Calculated-MW:27 kDa**



Immunohistochemistry of paraffin-embedded Human lung using LGALS3 Polyclonal Antibody at dilution of 1:200



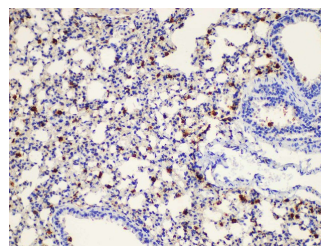
Immunohistochemistry of paraffin-embedded Mouse spleen using LGALS3 Polyclonal Antibody at dilution of 1:200



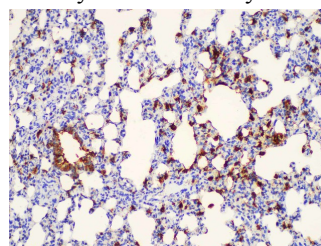
Western Blot analysis of 1)Raw264.7, 2)NIH/3T3 using LGALS3 Polyclonal Antibody at dilution of 1:1000

**Observed-MW:27 kDa**

**Calculated-MW:27 kDa**



Immunohistochemistry of paraffin-embedded Mouse lung using LGALS3 Polyclonal Antibody at dilution of 1:200



Immunohistochemistry of paraffin-embedded Rat lung using LGALS3 Polyclonal Antibody at dilution of 1:200

### Preparation & Storage

### For Research Use Only

Toll-free: 1-888-852-8623  
Web: [www.elabscience.com](http://www.elabscience.com)

Tel: 1-832-243-6086  
Email: [techsupport@elabscience.com](mailto:techsupport@elabscience.com)

Fax: 1-832-243-6017

Rev. V2.0

**Storage**

Store at -20°C Valid for 12 months. Avoid freeze / thaw cycles.

**Shipping**

The product is shipped with ice pack, upon receipt, store it immediately at the temperature recommended.

**Background**

Galectins are a family of animal lectins defined by shared characteristic amino-acid sequences and affinity for  $\beta$ -galactose-containing oligosaccharides. Galectin-3 contains one carbohydrate recognition domain (CRD) and a proline- and glycine-rich N-terminal domain through which is able to form oligomers. Galectin-3 is widely expressed in many normal tissues and a variety of tumors. It is found intracellularly in nucleus and cytoplasm or secreted outside of cell, being present on the cell surface or in the extracellular space. Galectin-3 is involved in various biological processes including cell growth, adhesion, differentiation, apoptosis, angiogenesis, immune response, neoplastic transformation and metastasis.