

gamma Tubulin Monoclonal Antibody

catalog number: E-AB-22137

Note: Centrifuge before opening to ensure complete recovery of vial contents.

Description

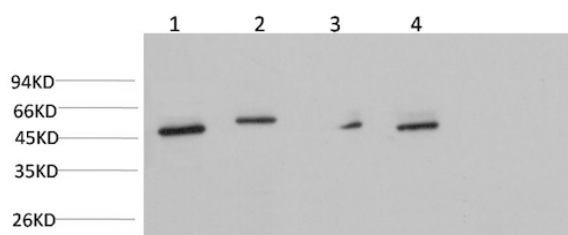
Reactivity	Human;Mouse;Rat
Immunogen	Synthetic Peptide of Gamma Tubulin
Host	Mouse
Isotype	IgG
Clone	3E4
Purification	Protein A purification
Conjugation	Unconjugated
buffer	Phosphate buffered solution, pH 7.4, containing 0.05% stabilizer, 0.5% protein protectant and 50% glycerol.

Applications

Recommended Dilution

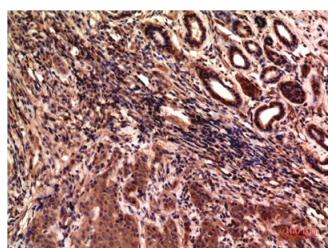
WB	1:1000-2000
IHC	1:100-200

Data

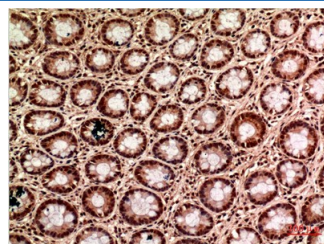


Western Blot analysis of Jurkat, Hela, Mouse brain, Rat brain using gamma Tubulin Monoclonal Antibody at dilution of 1:1000.

Observed-MV:50 kDa



Immunohistochemistry of paraffin-embedded Human breast carcinoma tissue using gamma Tubulin Monoclonal Antibody at dilution of 1:200.



Immunohistochemistry of paraffin-embedded Human colon carcinoma tissue using gamma Tubulin Monoclonal Antibody at dilution of 1:200.

Preparation & Storage

Storage	Store at -20°C Valid for 12 months. Avoid freeze / thaw cycles.
Shipping	The product is shipped with ice pack, upon receipt, store it immediately at the temperature recommended.

Background

For Research Use Only

gamma Tubulin Monoclonal Antibody

catalog number: E-AB-22137



This gene encodes a member of the tubulin superfamily. The encoded protein localizes to the centrosome where it binds to microtubules as part of a complex referred to as the gamma-tubulin ring complex. The protein mediates microtubule nucleation and is required for microtubule formation and progression of the cell cycle. A pseudogene of this gene is found on chromosome 7.

TUBG1 (Tubulin Gamma 1) is a Protein Coding gene. Diseases associated with TUBG1 include Cortical Dysplasia, Complex, With Other Brain Malformations 4 and Reducing Body Myopathy. Among its related pathways are Regulation of PLK1 Activity at G2/M Transition and Sertoli-Sertoli Cell Junction Dynamics. GO annotations related to this gene include GTP binding and structural constituent of cytoskeleton. An important paralog of this gene is TUBG2.

For Research Use Only

A Reliable Research Partner in Life Science and Medicine
Tel: 400-999-2100

Email: techsupport@elabscience.cn

Web: www.elabscience.cn

Rev. V1.7