

SOX-2 Polyclonal Antibody

Catalog Number: E-AB-70108



Note: Centrifuge before opening to ensure complete recovery of vial contents.

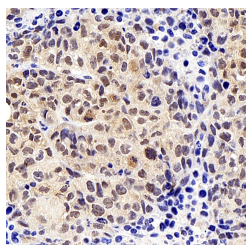
Description

Reactivity	Mouse,Rat
Immunogen	KLH conjugated Synthetic peptide corresponding to Mouse SOX2
Host	Rabbit
Isotype	IgG
Purification	Affinity purification
Conjugation	Unconjugated
Formulation	PBS with 0.02% sodium azide, 1% protective protein and 50% glycerol, pH7.4

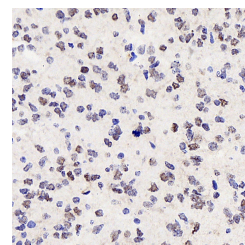
Applications Recommended Dilution

IHC	1:200-1:800
------------	-------------

Data



Immunohistochemistry analysis of paraffin-embedded mice tumor with hela using SOX-2 Polyclonal Antibody at dilution of 1:300.



Immunohistochemistry analysis of paraffin-embedded fetal rat brain using SOX-2 Polyclonal Antibody at dilution of 1:300.

Preparation & Storage

Storage Store at -20°C. Avoid freeze / thaw cycles.

Background

Sox2, also known as SRY (sex determining region Y)-box 2, is a transcription factor essential for maintaining self-renewal of undifferentiated ES cells and is one of the key transcription factors used to reprogram mouse and human fibroblasts to a pluripotent state. Sox2 expressed in undifferentiated pluripotent stem cells and germ cells during development.

For Research Use Only

A Reliable Research Partner in Life Science and Medicine

Toll-free: 1-888-852-8623

Web: www.elabscience.com

Tel: 1-832-243-6086

Email: techsupport@elabscience.com

Fax: 1-832-243-6017