

# c-Rel Polyclonal Antibody

catalog number: E-AB-14893

**Note:** Centrifuge before opening to ensure complete recovery of vial contents.

## Description

<b>Reactivity</b>	Human
<b>Immunogen</b>	Recombinant protein of human REL
<b>Host</b>	Rabbit
<b>Isotype</b>	IgG
<b>Purification</b>	Affinity purification
<b>Conjugation</b>	Unconjugated
<b>buffer</b>	Phosphate buffered solution, pH 7.4, containing 0.05% stabilizer and 50% glycerol.

## Applications

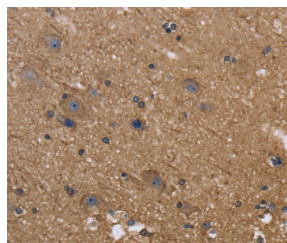
Applications	Recommended Dilution
<b>WB</b>	1:1000-1:5000
<b>IHC</b>	1:100-1:300

## Data

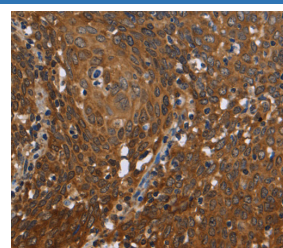


Western Blot analysis of HeLa and 293T cell using c-Rel Polyclonal Antibody at dilution of 1:1050

**Calculated-MV:69 kDa**



Immunohistochemistry of paraffin-embedded Human brain using c-Rel Polyclonal Antibody at dilution of 1:50



Immunohistochemistry of paraffin-embedded Human cervical cancer using c-Rel Polyclonal Antibody at dilution of 1:50

## Preparation & Storage

<b>Storage</b>	Store at -20°C Valid for 12 months. Avoid freeze / thaw cycles.
<b>Shipping</b>	The product is shipped with ice pack, upon receipt, store it immediately at the temperature recommended.

## Background

The REL gene encodes c-Rel, a transcription factor that is a member of the Rel/NFκB family, which also includes RELA (MIM 164014), RELB (604758), NFκB1 (MIM 164011), and NFκB2 (MIM 164012). These proteins are related through a highly conserved N-terminal region termed the 'Rel domain,' which is responsible for DNA binding, dimerization, nuclear localization, and binding to the NFκB inhibitor

## For Research Use Only