

Recombinant Human ATG4A Protein (His Tag)

Catalog Number:PKSH032099



Note: Centrifuge before opening to ensure complete recovery of vial contents.

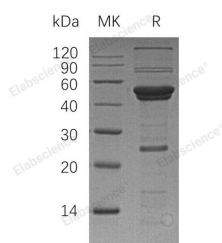
Description

Synonyms	Cysteine Protease ATG4A;AUT-Like 2 Cysteine Endopeptidase;Autophagin-2;Autophagy-Related Cysteine Endopeptidase 2;Autophagy-Related Protein 4 Homolog A;hAPG4A;ATG4A;APG4A;AUTL2
Species	Human
Expression Host	E.coli
Sequence	Met 1-Val398
Accession	Q8WYN0
Calculated Molecular Weight	47.5 kDa
Observed molecular weight	40-55 kDa
Tag	N-His

Properties

Purity	> 80 % as determined by reducing SDS-PAGE.
Endotoxin	< 1.0 EU per µg of the protein as determined by the LAL method.
Storage	Store at < -20°C, stable for 6 months. Please minimize freeze-thaw cycles.
Shipping	This product is provided as liquid. It is shipped at frozen temperature with blue ice/gel packs. Upon receipt, store it immediately at < - 20°C.
Formulation	Supplied as a 0.2 µm filtered solution of PBS, pH7.4.
Reconstitution	Not Applicable

Data



> 80 % as determined by reducing SDS-PAGE.

Background

Cysteine Protease ATG4A (ATG4A) is a cytoplasmic protein that belongs to the peptidase C54 family. ATG4A is widely expressed in many tissues at a low level, but the highest expression is observed in skeletal muscle and brain. ATG4A is a cysteine protease required for autophagy; it cleaves the C-terminal part of MAP1LC3, GABARAPL2 or GABARAP. ATG4A is inhibited by N-ethylmaleimide. It is suggested that ATG4A has a significant role in suppressing various cancers.

For Research Use Only

A Reliable Research Partner in Life Science and Medicine

Toll-free: 1-888-852-8623

Web: www.elabscience.com

Tel: 1-832-243-6086

Email: techsupport@elabscience.com

Fax: 1-832-243-6017