

Recombinant Mouse Ccl21a Protein(Trx Tag)

Catalog Number: PDEM100119

Note: Centrifuge before opening to ensure complete recovery of vial contents.

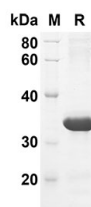
Description

| | |
|----------------------|--|
| Species | Mouse |
| Source | E.coli-derived Mouse Ccl21a protein Ser24-Gly133, with an N-terminal Trx |
| Calculated MW | 32 kDa |
| Observed MW | 35 kDa |
| Accession | P84444 |
| Bio-activity | Not validated for activity |

Properties

| | |
|-----------------------|--|
| Purity | > 90% as determined by reducing SDS-PAGE. |
| Endotoxin | < 10 EU/mg of the protein as determined by the LAL method |
| Storage | Generally, lyophilized proteins are stable for up to 12 months when stored at -20 to -80 °C. Reconstituted protein solution can be stored at 4-8°C for 2-7 days. Aliquots of reconstituted samples are stable at < -20°C for 3 months. |
| Shipping | This product is provided as lyophilized powder which is shipped with ice packs. |
| Formulation | Lyophilized from a 0.2 µm filtered solution in PBS with 5% Trehalose and 5% Mannitol. |
| Reconstitution | It is recommended that sterile water be added to the vial to prepare a stock solution of 0.5 mg/mL. Concentration is measured by UV-Vis. |

Data



SDS-PAGE analysis of Mouse Ccl21a proteins, 2 µg/lane of Recombinant Mouse Ccl21a proteins was resolved with an SDS-PAGE under reducing conditions, showing bands at 32 KD

For Research Use Only

Toll-free: 1-888-852-8623
Web: www.elabscience.com

Tel: 1-832-243-6086
Email: techsupport@elabscience.com

Fax: 1-832-243-6017

Rev. V1.7