

## Recombinant TRIM21 Monoclonal Antibody

catalog number: **E-AB-81491**

**Note:** Centrifuge before opening to ensure complete recovery of vial contents.

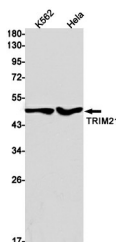
### Description

<b>Reactivity</b>	Human
<b>Immunogen</b>	Recombinant protein of human TRIM21
<b>Host</b>	Rabbit
<b>Isotype</b>	IgG
<b>Clone</b>	R01-1E8
<b>Purification</b>	Affinity Purified
<b>Buffer</b>	50mM Tris-Glycine(pH 7.4), 0.15M NaCl, 40% Glycerol, 0.05% stabilizer and 0.05% protective protein.

### Applications Recommended Dilution

<b>WB</b>	1:500-1:1000
-----------	--------------

### Data



Western blot detection of TRIM21 in K562, HeLa cell lysates using TRIM21 Rabbit mAb (1:1000 diluted). Predicted band size: 54 kDa. Observed band size: 50 kDa.

**Observed-MW: 50 kDa**

**Calculated-MW: 54 kDa**

### Preparation & Storage

<b>Storage</b>	Store at -20°C Valid for 12 months. Avoid freeze / thaw cycles.
<b>Shipping</b>	The product is shipped with ice pack, upon receipt, store it immediately at the temperature recommended.

### Background

This gene encodes a member of the tripartite motif (TRIM) family. The TRIM motif includes three zinc-binding domains, a RING, a B-box type 1 and a B-box type 2, and a coiled-coil region. The encoded protein is part of the RoSSA ribonucleoprotein, which includes a single polypeptide and one of four small RNA molecules. The RoSSA particle localizes to both the cytoplasm and the nucleus. RoSSA interacts with autoantigens in patients with Sjogren syndrome and systemic lupus erythematosus.

### For Research Use Only